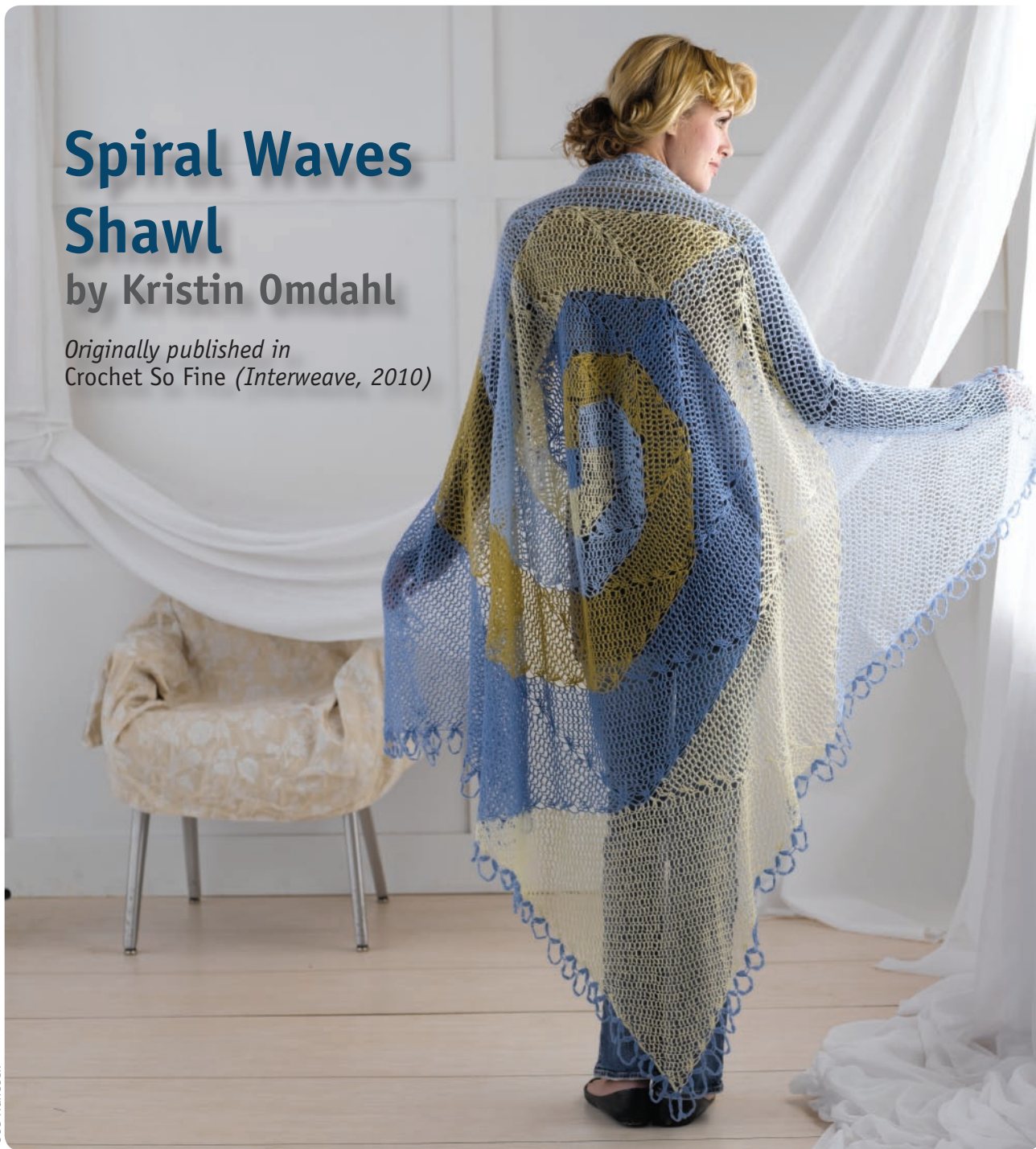


Spiral Waves Shawl

by Kristin Omdahl

*Originally published in
Crochet So Fine (Interweave, 2010)*



Joe Hancock

Copyright Interweave Press LLC. Not to be reprinted. All rights reserved.

Spiral Waves Shawl originally published in *Crochet So Fine* (Interweave, 2010). ©Interweave Press LLC. Not to be reprinted. All rights reserved.



INTERWEAVE

publishers of *Interweave Knits* magazine...join the online knitting community at KnittingDailyTV.com
Visit InterweaveStore.com/knittingdailytv for more great patterns!

spiral waves SHAWL

I won't deny it; I am drawn to spirals, especially those found in the natural world. The growth spiral, such as that in a nautilus shell, is a naturally occurring pattern in nature, and the spiral's growth is proportional to its size. I had an idea to combine a growth spiral with a log cabin square. Using four colors, I began with four little squares in the center. On each following round, I began each color by picking up stitches along two colors and then decreased out in a triangle. And so, this large, versatile shawl was born. Wear it long and draped over your shoulders or fold it in half like a rectangle or triangle. You can even roll the edge to create a shawl collar; the possibilities are endless!



YARN

Fingering weight (#1 Super Fine); 825 yd (754.4 m) MC, 650 (594.4 m) yd CC1, 650 (594.4 m) yd CC2, 650 yd (594.4 m) CC3—2,775 yd (2537.5 m) total.

shown: Filatura di Crosa, Superior (70% cashmere/30% schappe silk; 330 yd [301.8 m]/.88 oz [25 g]): #32 light denim (MC), 3 balls; #17 pale yellow (CC1), 2 balls; #03 light blue (CC2), 2 balls; #31 mustard (CC3), 2 balls.

HOOK

G/6 (4mm) or size needed to obtain gauge.

NOTIONS

Tapestry needle.

GAUGE

10 sts x 9 rows sc = 4" (10 cm).

FINISHED SIZE

60" (152.5 cm) square.

Spiral Waves Shawl originally published in *Crochet So Fine* (Interweave, 2010). ©Interweave Press LLC. Not to be reprinted. All rights reserved.



INTERWEAVE, publishers of *Interweave Knits* magazine...join the online knitting community at KnittingDailyTV.com
Visit InterweaveStore.com/knittingdailytv for more great patterns!

NOTE

°There are a fair amount of ends to weave in on this project, but you can cut down on your finishing time by crocheting over ends (see Glossary) as you go. The texture of the fiber in the yarn used for this project holds the tails firmly in place. If you still have some little ends poking out, you can trim them down after blocking.

SPECIAL STITCHES

Foundation single crochet (fsc) see Glossary.

2 treble crochet cluster (2-tr cl) see Glossary.

Spiral Waves Shawl

Refer to stitch diagram A on p. 4 and the construction diagram on p. 5 for assistance.

Beginning Squares

Row 1: With MC, work 10 fsc, switch to CC1, with CC1, work 10 fsc—20 sts.

Row 2: With CC1, ch 1, sc in each of first 10 sc, change to MC, sc in each sc across, turn—20 sc.

Row 3: With MC, ch 1, sc in each of first 10 sc, change to CC1, sc in each sc across, turn—20 sc.

Rows 4–10: Rep Rows 2–3 three times, rep Row 2 once more. Fasten off both yarns.

Row 11: With RS facing, join CC3 with sl st in first st, ch 1, sc in each of first 10 sc, change to CC2, sc in each sc across—20 sc.

Row 12: With CC2, ch 1, sc in each of first 10 sc, change to CC3, sc in each sc across, turn—20 sc.

Rows 13–20: Rep Rows 11–12 four times—20 sts. Fasten off CC2. Do not fasten off CC3.

Triangles Level 1 (TL1)

CC3 TL1: With CC3, turn work 90 degrees clockwise and work in ends of rows.

Row 1: Ch 1, work 10 sc evenly across CC3 square, work 10 sc evenly across CC2 square, turn—20 sc.

Row 2: Ch 1, sc2tog in first 2 sc, sc in each sc across to within last 2 sts, sc2tog in last 2 sc, turn—18 sts.

Rows 3–10: Rep Row 2—2 sts.

Row 11: Ch 1, sc2tog in next 2 sc. Fasten off.

CC2 TL1: Turn work 90 degrees clockwise. Join CC2 with sl st in top righthand corner sc, working across CC2 square and CC1 square, rep Rows 1–11 with CC2. Fasten off.

CC1 TL1: Turn work 90 degrees clockwise. Join CC1 with sl st in top righthand corner sc, working across CC1 square and MC square, rep Rows 1–11 with CC1. Fasten off.

MC TL1: Turn work 90 degrees clockwise. Join MC with sl st in top righthand corner sc, working across MC square and CC3 square, rep Rows 1–11 with MC. Do not fasten off.

Triangles Level 2 (TL2)

MC TL2: Turn work 45 degrees clockwise and work in ends of rows of MC TL1 and CC3 TL1.

Row 1: With MC, ch 1, work 15 sc evenly across MC TL1 and work 15 sc evenly across CC3 TL1, turn—30 sc.

Row 2: Ch 1, sc2tog in first 2 sts, sc across to within last 2 sts, sc2tog in last 2 sc, turn—28 sts.

Rows 3–15: Rep Row 2—2 sts.

Row 16: Ch 1, sc2tog in next 2 sc. Fasten off.

CC3 TL2: Turn work 90 degrees and work in ends of rows of CC3 TL1 and CC2 TL1. Join CC3 with sl st in top righthand corner sc, rep Rows 1–16 of MC TL2 with CC3. Fasten off.

CC2 TL2: Turn work 90 degrees and work in ends of rows of CC2 TL1 and CC1 TL1. Join CC2 with sl st in top righthand corner sc, rep Rows 1–16 of MC TL2 with CC2. Fasten off.

CC1 TL2: Turn work 90 degrees and work in ends of rows of CC1 TL1 and MC TL1. Join CC1 with sl st in top righthand corner sc, rep Rows 1–16 of MC TL2 with CC1. Do not fasten off.

Triangles Level 3 (TL3)

CC1 TL3: Turn work 45 degrees and work in ends of rows CC1 TL2 and MC TL2.

Row 1: Ch 1, work 20 sc evenly across CC1 TL2 and work 20 sc evenly across MC TL2, turn—40 sc.

Row 2: Ch 1, sc2tog in first 2 sts, sc across to within last 2 sts, sc2tog in last 2 sc, turn—38 sts.



Rows 3–20: Rep Row 2.

Row 21: Ch 1, sc2tog in next 2 sc. Fasten off.

MC TL3: Turn work 90 degrees and work in ends of rows of MC TL2 and CC3 TL2. Join MC with sl st in top right-hand corner sc, rep Rows 1–21 with MC. Fasten off.

CC3 TL3: Turn work 90 degrees and work in ends of rows CC3 TL2 and CC2 TL2. Join CC3 with sl st in top righthand corner sc, rep Rows 1–21 of CC1 TL3 with CC3. Fasten off.

CC2 TL3: Turn work 90 degrees and work in ends of rows CC2 TL2 and CC1 TL2. Join CC2 with sl st in top righthand corner sc, rep Rows 1–21 of CC1 TLC with CC2. Do not fasten off.

Triangles Level 4 (TL4)

CC2 TL4: Turn work 45 degrees and work in ends of rows of CC2 TL3 and CC1 TL3.

Row 1: Ch 1, work 25 sc evenly across CC2 TL3 and work 25 sc evenly across CC1 TL3, turn—50 sc.

Row 2: Ch 1, sc2tog in first 2 sc, sc across to within last 2 sts, sc2tog in last 2 sc, turn—48 sts.

Rows 3–25: Rep Row 2—2 sts.

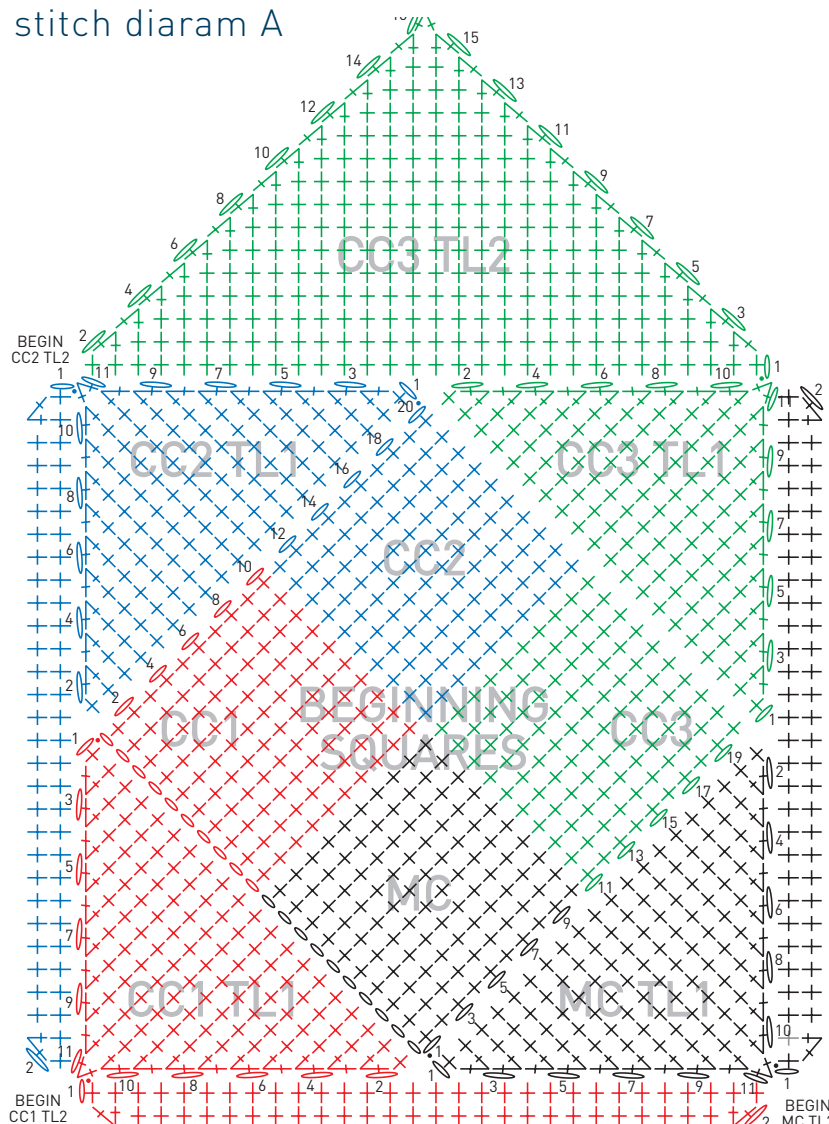
Row 26: Ch 1, sc2tog in next 2 sc. Fasten off.

CC1 TL4: Turn work 90 degrees and work in ends of rows of CC1 TL3 and MC TL3. Join CC1 with sl st in top right-hand corner sc, rep Rows 1–26 of CC2 TL4 with CC1. Fasten off.

MC TL4: Turn work 90 degrees and work in ends of rows of MC TL3 and CC3 TL3. Join MC with sl st in top right-hand corner sc, rep Rows 1–26 of CC2 TL4 with MC. Fasten off.

CC3 TL4: Turn work 90 degrees and work in ends of rows of CC3 TL3 and CC2 TL3. Join CC3 with sl st in top right-hand corner sc, rep Rows 1–26 of CC2 TL4 with CC3. Do not fasten off.

stitch diaram A



stitch key

- = chain (ch)
- = slip st (sl st)
- † = single crochet (sc)
- ⋈ = sc2tog
- ⌋ = double crochet (dc)
- ⌋⌋ = 2-tr cluster

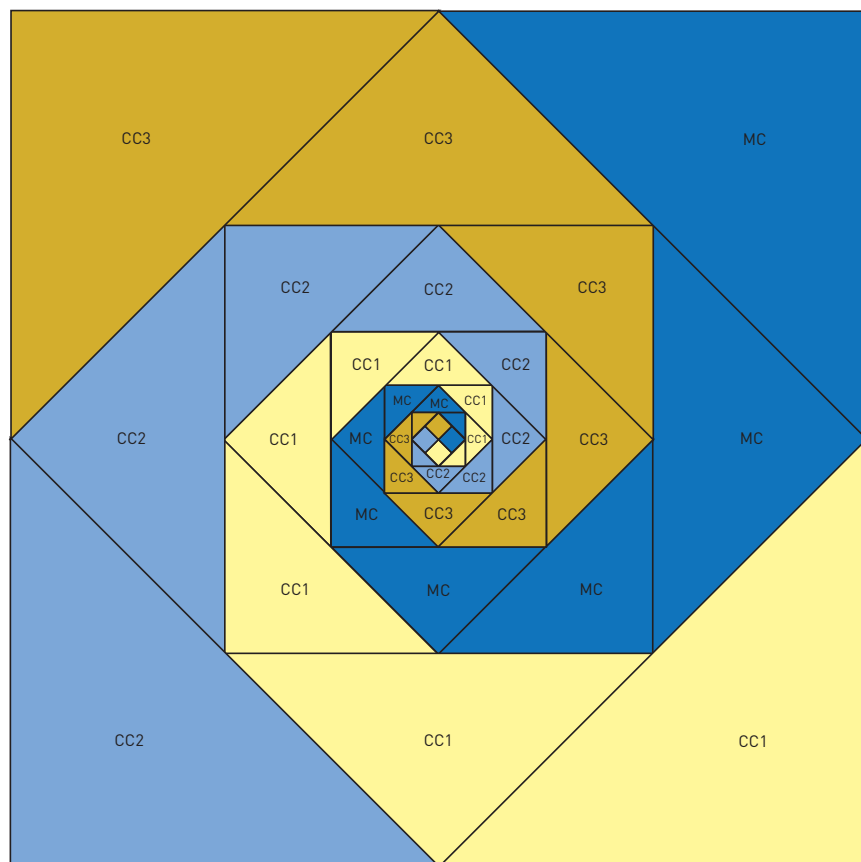
Spiral Waves Shawl originally published in *Crochet So Fine* (Interweave, 2010). ©Interweave Press LLC. Not to be reprinted. All rights reserved.



INTERWEAVE

publishers of *Interweave Knits* magazine...join the online knitting community at KnittingDailyTV.com
Visit InterweaveStore.com/knittingdailytv for more great patterns!

construction diagram



Triangles Level 5 (TL5)

CC3 TL5: Turn work 45 degrees and work in ends of rows of CC3 TL4 and CC2 TL4.

Row 1: Ch 1, work 30 sc evenly across CC3 TL4 and work 30 sc evenly across CC2 TL4, turn—60 sc.

Row 2: Ch 1, sc2tog in first 2 sc, sc across to within last 2 sts, sc2tog in last 2 sc, turn—58 sts.

Rows 3–30: Rep Row 2—2 sts.

Row 31: Ch 1, sc2tog in next 2 sc. Fasten off.

CC2 TL5: Turn work 90 degrees and work in ends of rows of CC2 TL4 and CC1 TL4. Join CC2 with sl st in top right-hand corner sc, rep Rows 1–31 of CC3 TL5 with CC2. Fasten off.

CC1 TL5: Turn work 90 degrees and work in ends of rows of CC1 TL4 and MC TL4. Join CC1 with sl st in top right-hand corner sc, rep Rows 1–31 of CC3 TL5 with CC1. Fasten off.

MC TL5: Turn work 90 degrees and work in ends of rows MC TL4 and CC3 TL4. Join MC with sl st in top right-hand corner sc, rep Rows 1–31 of CC3 TL4 with MC. Do not fasten off.

Triangles Level 6 (TL6)

MC TL6: Turn work 45 degrees and work in ends of rows MC TL5 and CC3 TL5.

Row 1: Ch 1, work 35 sc evenly across MC TL5 and work 35 sc evenly across CC3 TL5, turn—70 sc.

Row 2: Ch 1, sc2tog in first 2 sc, sc across to within last 2 sts, sc2tog in last 2 sc, turn—68 sts.

Rows 3–35: Rep Row 2—2 sts.

Row 36: Ch 1, sc2tog in next 2 sts. Fasten off.

CC3 TL6: Turn work 90 degrees and work in ends of rows of CC3 TL5 and CC2 TL5. Join CC3 with sl st in top right-hand corner sc, rep Rows 1–36 of MC TL6 with CC3. Fasten off.



CC2 TL6: Turn work 90 degrees and work in ends of rows of CC2 TL6 and CC1 TL6. Join CC2 with sl st in top righthand corner sc, rep Rows 1–36 of MC TL6 with CC2. Fasten off.

CC1 TL6: Turn work 90 degrees and work in ends of rows of CC1 TL6 and MC TL6. Join CC1 with sl st in top righthand corner sc, rep Rows 1–36 of MC TL6 with CC1. Do not fasten off.

Triangles Level 7 (TL7)

CC1 TL7: Turn work 45 degrees and work in ends of rows of CC1 TL6 and MC TL6.

Row 1: Ch 1, work 40 sc evenly across CC1 TL6 and work 40 sc evenly across MC TL6, turn—80 sc.

Row 2: Ch 1, sc2tog in first 2 sc, sc across to within last 2 sts, sc2tog in last 2 sc, turn—78 sts.

Rows 3–40: Rep Row 2—2 sts.

Row 41: Ch 1, sc2tog in next 2 sc. Fasten off.

MC TL7: Turn work 90 degrees and work in ends of rows of MC TL6 and CC3 TL6. Join MC with sl st in top right-hand corner sc, rep Rows 1–41 of CC1 TL7 with MC. Fasten off.

CC3 TL7: Turn work 90 degrees and work in ends of rows of CC3 TL6 and CC2 TL6. Join CC3 with sl st in top righthand corner sc, rep Rows 1–41 of CC1 TL7 with CC3. Fasten off.

CC2 TL7: Turn work 90 degrees and work in ends of rows of CC2 TL6 and CC1 TL6. Join CC2 with sl st in top righthand corner sc, rep Rows 1–41 of CC1 TL7 with CC2. Do not fasten off.

Triangles Level 8 (TL8)

CC2 TL8: Turn work 45 degrees and work in ends of rows of CC2 TL7 and CC1 TL7.

Row 1: Ch 1, work 45 sc evenly across CC2 TL7 and work 45 sc evenly across CC1 TL7, turn—90 sc.



Row 2: Ch 1, sc2tog in first 2 sc, sc across to within last 2 sts, sc2tog in last 2 sc, turn—88 sts.

Rows 3–45: Rep Row 2—2 sts.

Row 46: Ch 1, sc2tog in next 2 sc. Fasten off.

CC1 TL8: Turn work 90 degrees and work in ends of rows of CC1 TL7 and MC TL7. Join CC1 with sl st in top righthand corner sc, rep Rows 1–46 of CC2 TL8 with CC1. Fasten off.

MC TL8: Turn work 90 degrees and work in ends of rows MC TL7 and CC3 TL7. Join MC with sl st in top right-hand corner sc, rep Rows 1–46 of CC2 TL8 with MC. Fasten off.

CC3 TL8: Turn work 90 degrees and work in ends of rows of CC3 TL7 and CC2 TL7. Join CC3 with sl st in top righthand corner sc, rep Rows 1–46 of CC2 TL8 with CC3. Do not fasten off.

Triangles Level 9 (TL9)

CC3 TL9: Turn work 45 degrees and work in ends of rows of CC3 TL8 and CC2 TL8.

Row 1: Ch 1, work 50 sc evenly across CC3 TL8 and work 50 sc evenly across CC2 TL8, turn—100 sc.

Row 2: Ch 1, sc2tog in first 2 sc, sc across to within last 2 sts, sc2tog in last 2 sc, turn—98 sts.

Spiral Waves Shawl originally published in *Crochet So Fine* (Interweave, 2010). ©Interweave Press LLC. Not to be reprinted. All rights reserved.



INTERWEAVE, publishers of *Interweave Knits* magazine...join the online knitting community at KnittingDailyTV.com
Visit InterweaveStore.com/knittingdailytv for more great patterns!

Rows 3–50: Rep Row 2—2 sts. stitch diagram B

Row 51: Ch 1, sc2tog in next 2 sc. Fasten off.

CC2 TL9: Turn work 90 degrees and work in ends of rows of CC2 TL8 and CC1 TL8. Join CC2 with sl st in top right-hand corner sc, rep Rows 1–51 of CC3 TL9 with CC2. Fasten off.

CC1 TL9: Turn work 90 degrees and work in ends of rows of CC1 TL8 and MC TL8. Join CC1 with sl st in top righthand corner sc, rep Rows 1–51 of CC3 TL9 with CC1. Fasten off.

MC TL9: Turn work 90 degrees and work in ends of rows of MC TL8 and CC3 TL8. Join MC with sl st in top right-hand corner sc, rep Rows 1–51 of CC3 TL9 with MC. Do not fasten off.

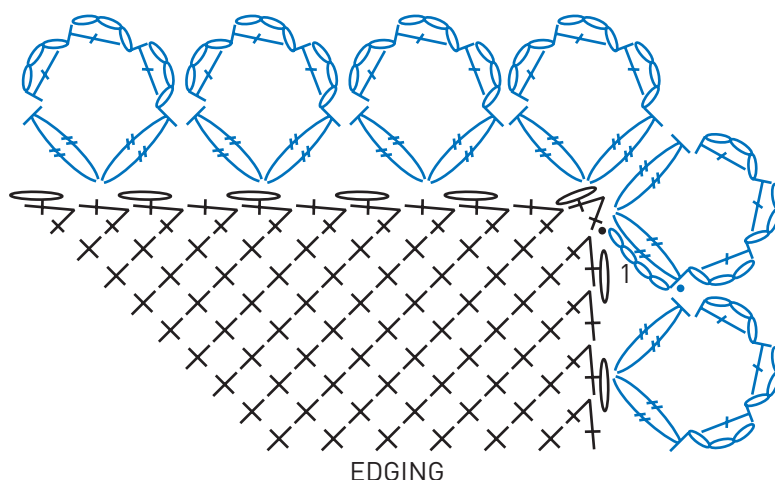
Edging

Refer to stitch diagram B for assistance.

With MC, ch 4, *work 2-tr cl in same corner st, [ch 3, dc in 3rd ch from hook] 3 times, 2-tr cl in same corner st, 2-tr cl in same corner st, [ch 3, dc in 3rd ch from hook] 3 times, 2-tr cl in same corner st, **skip next 2 sts, 2-tr cl in next st, [ch 3, dc in 3rd ch from hook] 3 times, 2-tr cl in same sp as last 2-tr cl, rep from ** to corner, skip next 2 sts, rep from * around. You should have about 34 reps per side and 2 reps in each corner—144 reps around, join with sl st to top of ch-4 at beg of rnd. Fasten off.

Wet or steam block to finished measurements. Weave in loose ends with a tapestry needle.

stitch diagram B



Spiral Waves Shawl originally published in *Crochet So Fine* (Interweave, 2010). ©Interweave Press LLC. Not to be reprinted. All rights reserved.



INTERWEAVE, publishers of *Interweave Knits* magazine...join the online knitting community at KnittingDailyTV.com
Visit InterweaveStore.com/knittingdailytv for more great patterns!

Foundation Single Crochet (fsc)

Ch 2, insert hook in 2nd ch from hook, yarn over hook and draw up a loop (2 loops on hook), yarn over hook, draw yarn through first loop on hook, yarn over hook and draw through 2 loops on hook—1 fsc made.

*Insert hook under 2 loops of ch made at base of previous stitch, yarn over hook and draw up a loop (2 loops on hook), yarn over hook and draw through first loop on hook, yarn over hook and draw through 2 loops on hook. Rep from * for length of foundation.

2 Treble Crochet Cluster (2-tr cl)

[Yarn over hook twice, insert hook in next stitch or space, yarn over hook, draw yarn through stitch or space, (yarn over hook, draw yarn through 2 loops on hook) twice] twice in same stitch or space, yarn over hook, draw yarn through all 3 loops on hook.



bookEXCERPT

Find more
great designs in
Crochet So Fine
published by
Interweave Press
(2010)

Switching Yarns and Crocheting Over Ends

When you switch yarns, add the new yarn by using it as the last loop of the last stitch completed with the previous yarn (see **Figure 1**, sample shown in single crochet).

Hold the tails of both the previous and new yarns together along the top of the stitches of the previous row (**Figure 1**); you will be crocheting around the tails. Insert your hook into the next stitch (under the tails), yarn over hook and draw up a loop. Complete the stitch normally, around the tails; as shown here (single crochet), yarn over hook, ensuring the hook is above the tails, draw the yarn through both loops on hook. The tails are being hidden inside the stitches (**Figure 2**). Continue crocheting around the tails in this manner until they are completely covered (**Figure 3**).



figure 1



figure 2



figure 3

Spiral Waves Shawl originally published in *Crochet So Fine* (Interweave, 2010). ©Interweave Press LLC. Not to be reprinted. All rights reserved.



INTERWEAVE

publishers of *Interweave Knits* magazine...join the online knitting community at KnittingDailyTV.com
Visit InterweaveStore.com/knittingdailytv for more great patterns!