









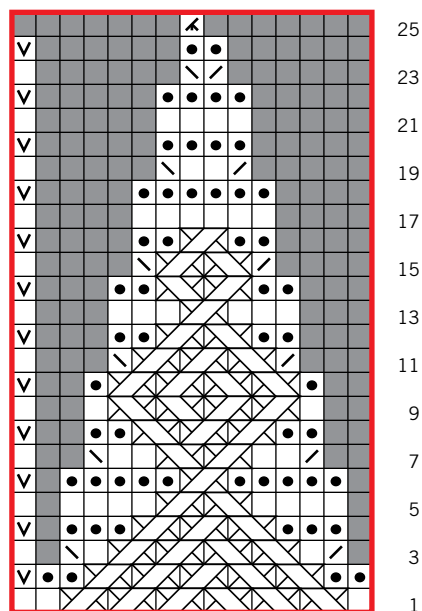
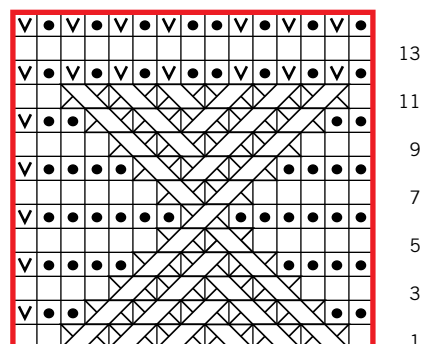


-  knit
-  purl
-  LT
-  RT
-  sl 1 pwise wyb
-  k2tog
-  ssk
-  k3tog
-  no stitch
-  pattern repeat

Crown Decrease Chart



Ogee Chart



BODY

With smaller needles, CO 120 evenly over 4 dpns. Place marker (pm) for beg of rnd and join for working in the rnd, being careful not to twist sts.

Rnd 1: Knit.

Rnd 2: *[P1, sl 1 purlwise (pwise) with yarn in back (wyb)] 3 times, p1, [p1, sl 1 pwise wyb] 4 times; rep from * 7 more times.

Rnds 3 and 4: Rep Rnds 1 and 2.

Change to larger needles.

Work Rnds 1–14 of Ogee patt (see Stitch Guide or chart) 3 times.

Work Rnds 1–25 of Crown Decreases (see Stitch Guide or chart)—8 sts rem.

Break yarn, leaving an 8" (20.5 cm) tail. Thread tail onto tapestry needle and draw through rem sts, pull snug to tighten, and fasten off inside.

FINISHING

Weave in ends. Block, gently shaping scallops at brim.

