



## Slouch Potato



Shown here: size 'M' (left) in Bare Naked Wools Kent DK, color *Beach Glass* and size 'S' (right) in Bare Naked Wools Ghillie Sport, color *Cream*

### Materials:

**Suggested Yarns:** Bare Naked Wools Kent DK, Stone soup DK, or Ghillie Sport, Ecobutterfly Organics Pakucho Organic Cotton Sport, Peru Naturtex Partners Pakucho Organic Cotton Sport, Pierrot Yarns Organic Cotton (Chuboso), Daruma Café Baby Organic, Vreseis Ltd Fox Fibre Baby Weight, Hamanaka Paume Mukuwata Baby or Paume Kusakizome, Classic Elite Yarns Allegoro, Mokely Adventure, Blue Sky Alpacas Skinny Cotton, Marks & Kattens M&K Eco Baby Bomull, Appalachian Baby Design Organic Cotton, Katia Eco Cotton, Knit Picks Simply Cotton Organic Sport, or any sport/DK yarn with approximately 75 to 80 yards per ounce

**Notes:** A cute, slouchy cap in four sizes (XS/S/M/L), with a wide, textured brim to frame the face. Worked completely in the round in an easy knit/purl motif, the cap has a snug fit below to keep it in place, but gives way to more volume up top that will slump into soft folds as desired. Substituting yarn and/or needles may result in an overall variation in size and elasticity.

**Finished Size:** 14(17, 20, 23) inches in circumference at brim (blocked) to fit heads measuring up to 18(21, 23, 26) inches around

**Yarn requirements:** 125(150, 200, 250) yards

**Gauge:** 22 sts and 32 rows = 4 inches in stockinette stitch on larger needles (unblocked)

**Needles:** size 6US (4.0 mm) 16-inch circular needle and DPNs (or size to obtain correct gauge)  
size 3US (3.25 mm) 16-inch circular needle for brim (or 3 sizes smaller than gauge needle)

Copyright © 2013 anne hanson. **This material may not be shared or reprinted without the permission of the author; this pattern may not be used to produce items for commercial purposes.** For reprint information or technical assistance, contact: [jeeves@knitspot.com](mailto:jeeves@knitspot.com)

## Slouch Potato

**Notes:** pattern numbers are listed in size order with smallest size first, followed by larger sizes in parentheses.

### Setup and brim:

With smaller needle, CO 80(96, 112, 128) sts. PM and join to begin working brim pattern in the round as follows (charted pattern and legend appear on page 3):

**R1, R2, R5, R6, R9 and R10:** [k9, p2, k2, p2, k1] repeat around

**R3, R4, R7, and R8:** [k1, p6, (k2, p2) twice, k1] repeat around

**R11, R12, R15, R16, R19, and R20:** [k1, p2, k2, p2, k9] repeat around

**R13, R14, R17, and R18:** [k1, (p2, k2) twice, p6, k1] repeat around

Repeat R1 through R10 0(1, 1, 1) times MORE, then work a reverse stockinette ridge as follows:

**R1 and R4:** knit all sts around

**R2 and R3:** purl all sts around

**Next rnd (inc rnd):** [m1, k4] repeat around [100(120, 140, 160) sts]

Change to larger needles to continue.

### Hat body:

Work straight in stockinette (knit every rnd) until piece measures 5.5(6, 6.5, 7) inches from CO edge.

**Setup rnd for decrease section:** [k10(12, 14, 16), PM] repeat around

### Begin decreases for crown:

**Decrease rnd:** [knit to 2 sts before marker, k2tog] repeat around

**Next rnd:** knit all sts around

Repeat these two rnds until 20 sts remain, stopping after R1 is complete; change to DPNs or two circular needles as needed.

**Next rnd:** [k2tog] repeat around [10 sts remain]

Cut yarn to an 8-inch length and thread tail through remaining sts. Pull snug and secure with a small stitch, then proceed to finishing instructions below.

### Finishing:

Weave in all loose ends on WS of fabric. Soak piece in lukewarm water with wool soap for approximately one hour. Rinse and roll in a towel to squeeze out excess moisture. Shape and lay flat to dry without stretching; turn and reshape frequently to encourage loft and prevent creasing.

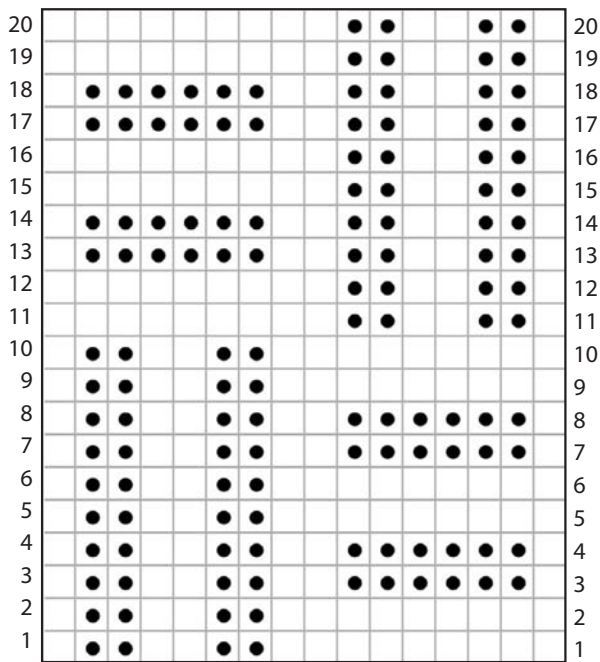
CO = cast on  
m1 = make 1

dec = decrease  
PM = place marker

DPN = double-pointed needle  
rnd = round RS = right side

K(P)2tog = knit(purl) 2 sts together as one  
st(s) = stitch(es) WS = wrong side

## Chart for Brim



Pattern repeat of 16 sts; work 5(6, 7, 8)  
times per rnd

### Legend:

 knit  
knit stitch

 purl  
purl stitch

### Chart Notes:

Begin chart after completing the CO instructions on page 2.

**Work each chart row from right to left.**

Work entire chart once, then work R1 through R10 0(1, 1, 1) times MORE. Return to pattern notes on page 2 to complete piece.

## Patterns

Knitspot is the go-to source for beautiful handknit designs by Anne Hanson. Our patterns feature step by step written and charted instructions that will elevate your knitting experience.

[www.knitspot.com/knitting\\_pattern/](http://www.knitspot.com/knitting_pattern/)



## Blog

Anne also writes about knitting, spinning, and designing in her popular Knitspot blog, where she engages readers in an ongoing conversation on fiber and other vital life topics.

[www.knitspot.com](http://www.knitspot.com)

## Clubs

Knitspot yarn clubs are reknowned for perfect pairings of luxury yarn and design, as well as the rollicking good fun in our Ravelry clubhouse where members meet, chat, and knit through club projects together.

[www.knitspot.com/clubs/](http://www.knitspot.com/clubs/)



## Bare Naked Wools

Our Bare Naked yarns are as close to the farm as a knitter can get. Fresh fiber produced from regional growers spun into yarn at artisan mills. The collection focuses on single-breed, pure wool yarns and exotic blends; colors range an entire array of natural tones—quite simply, yarn the way nature intended.

[www.barenakedwools.com](http://www.barenakedwools.com)



KNITSPOT