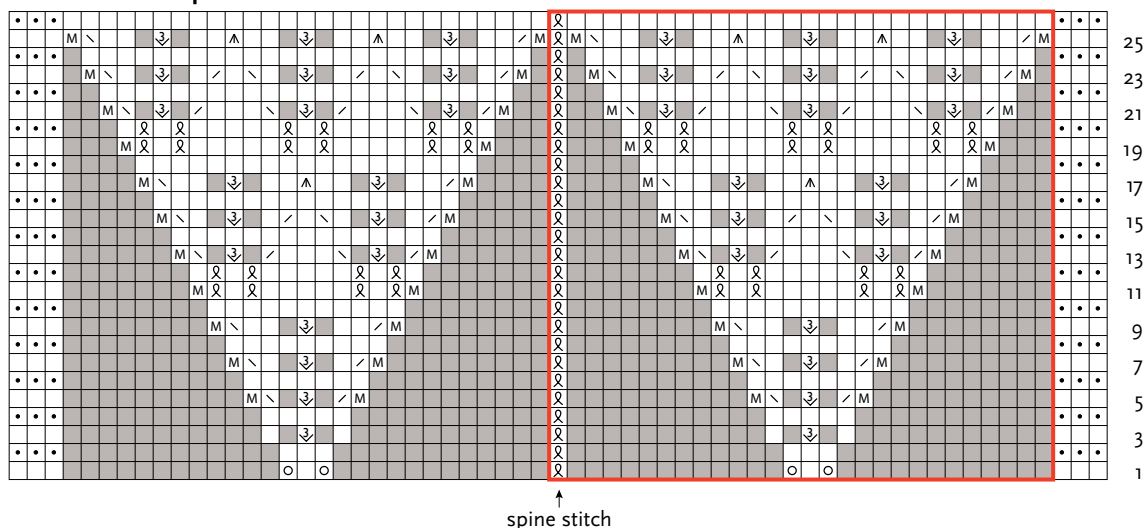


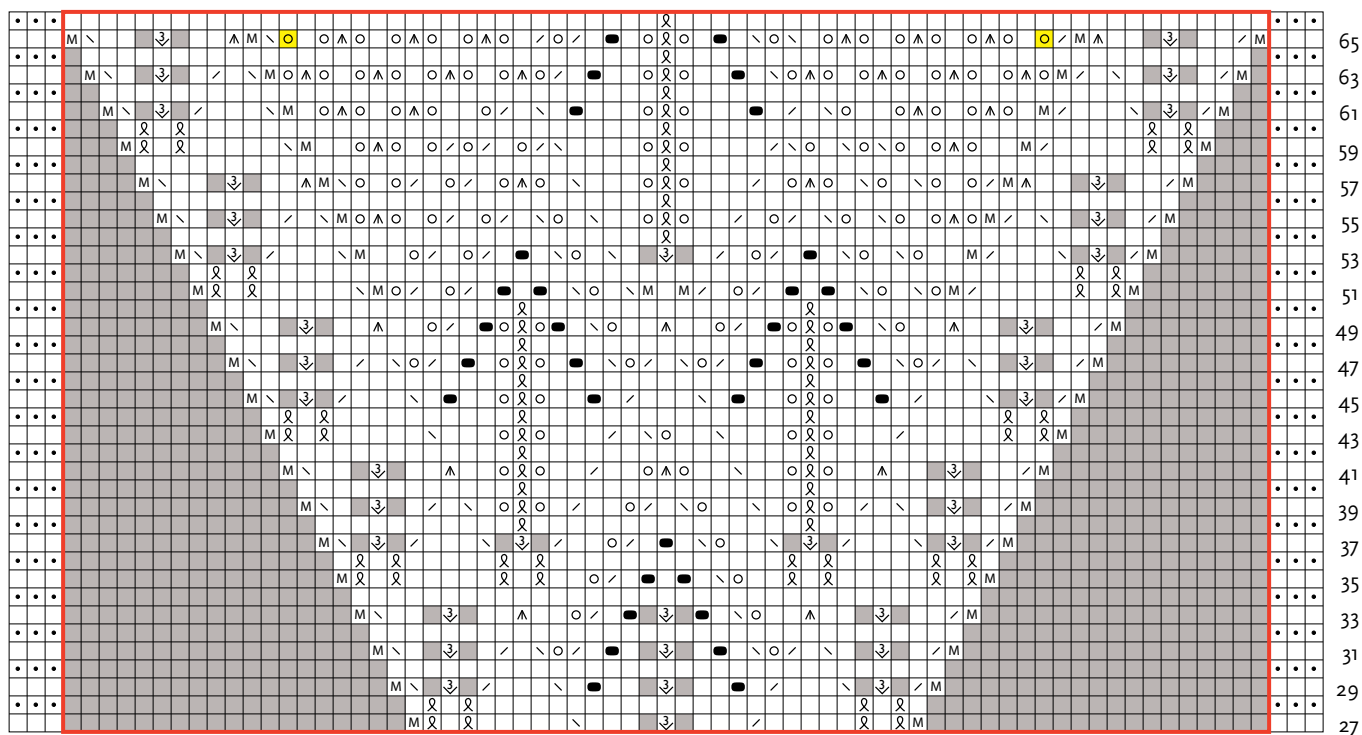
Sunflower Set-Up Chart



Work whole chart once for triangle shawl.

Work only the sts in the red box 4 times for square blanket.

Sunflower Chart A



The center twisted “spine” stitch is not included on the charts A, B, C, or D; maintain it by knitting or purling tbl.

Work whole chart for triangle shawl, working red box twice, working the twisted spine stitch between the repeats.

Work only the sts in the red box 4 times for square blanket, working the twisted spine stitch between the repeats.