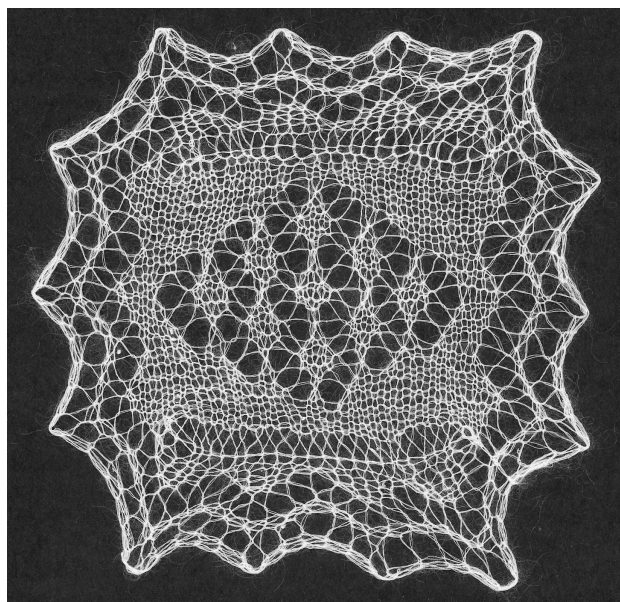
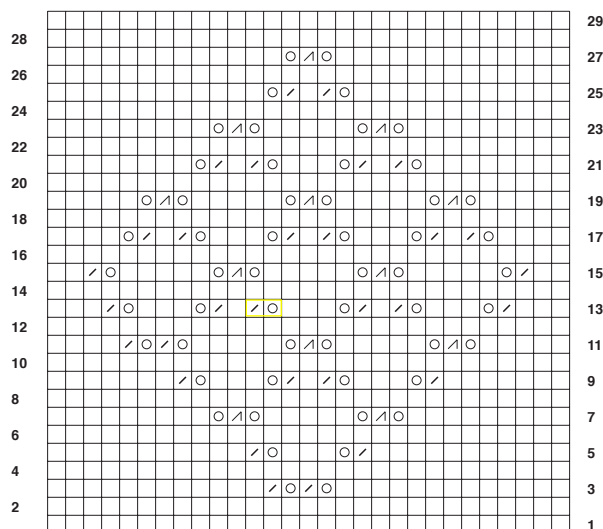
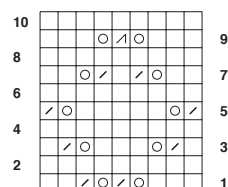


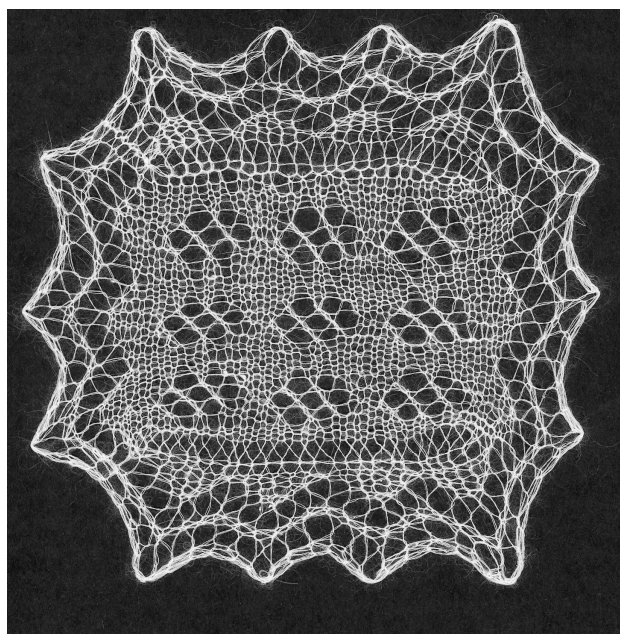
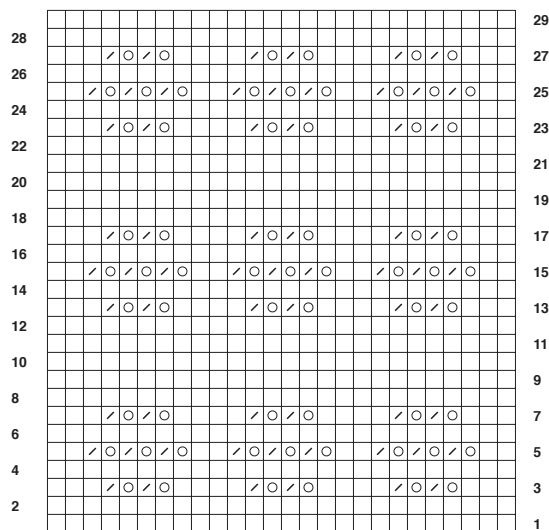
The **large strawberry** is patterned on right-side rows only; wrong-side rows are knitted. This particular configuration of large strawberries forms a diamond and is used most commonly in the frame but also as an allover pattern.



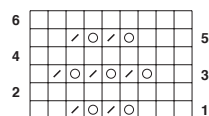
Large strawberry.

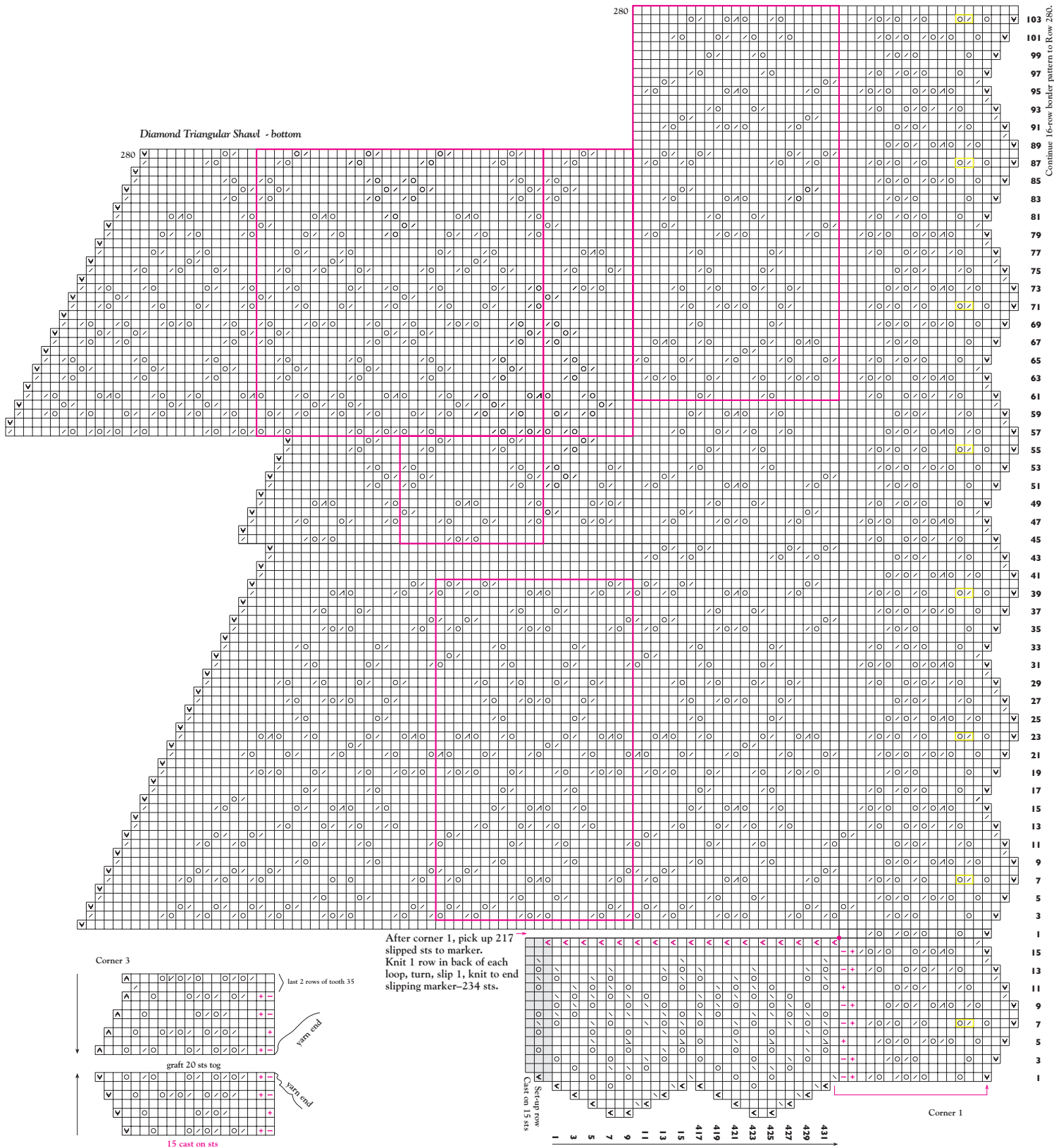


Cat's paws are patterned on right-side rows only; wrong-side rows are knitted. Cat's paws are used to fill up corners and are combined to form snowflake patterns.



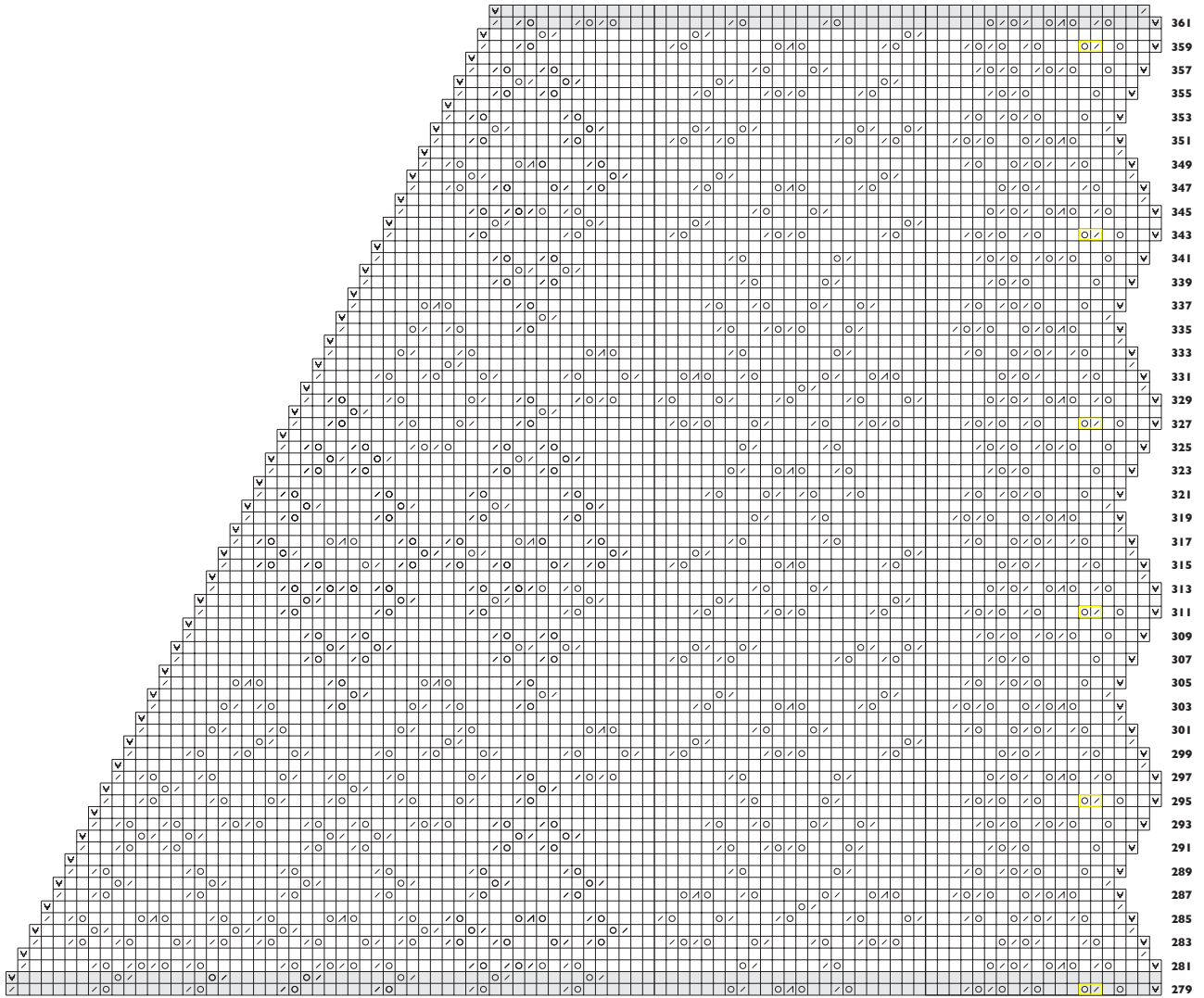
Cat's paws.



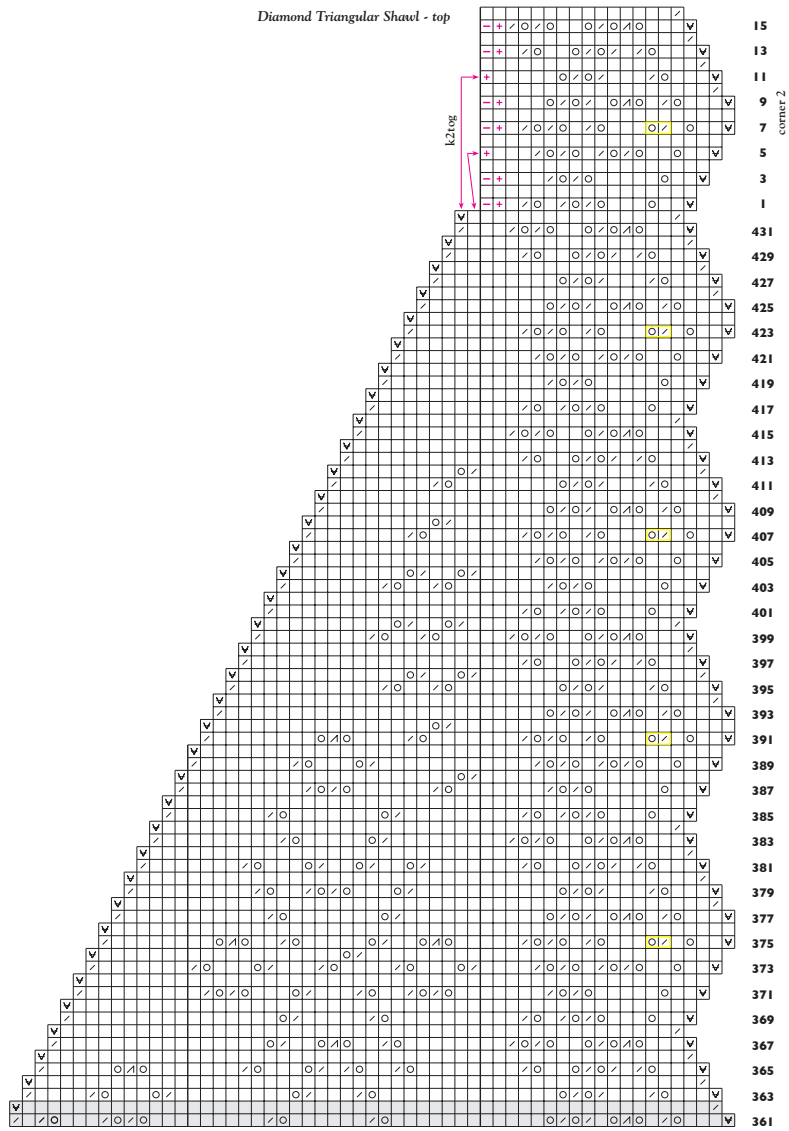


First (Rows 1-16) and twenty-seventh (Rows 417-432) teeth shown.
Corner 1: Turn using short rows.

Diamond Triangular Shawl - middle

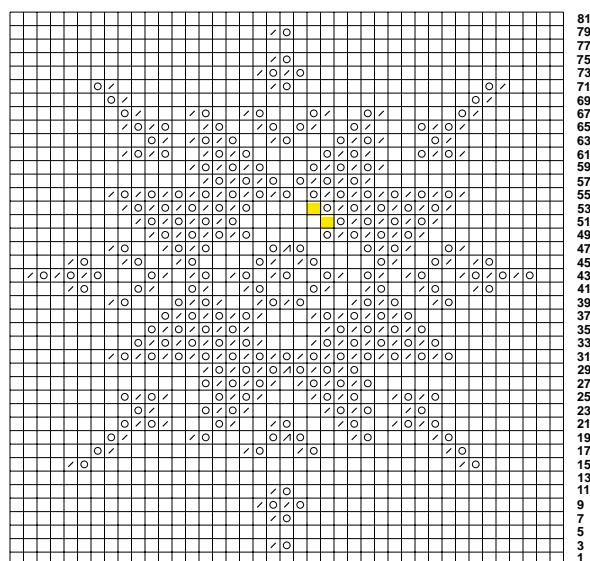


Diamond Triangular Shawl - top

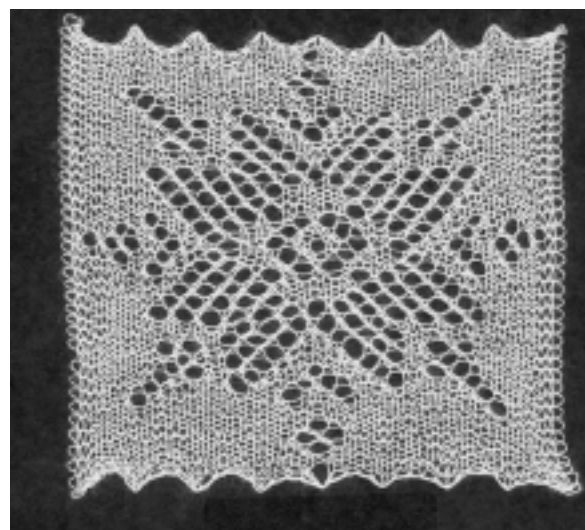


The image displays a 100x100 grid with a repeating pattern of small black squares. A vertical pink line is drawn through the center of the grid, separating the left and right halves. The grid is labeled with row numbers 1 to 100 on the right side.

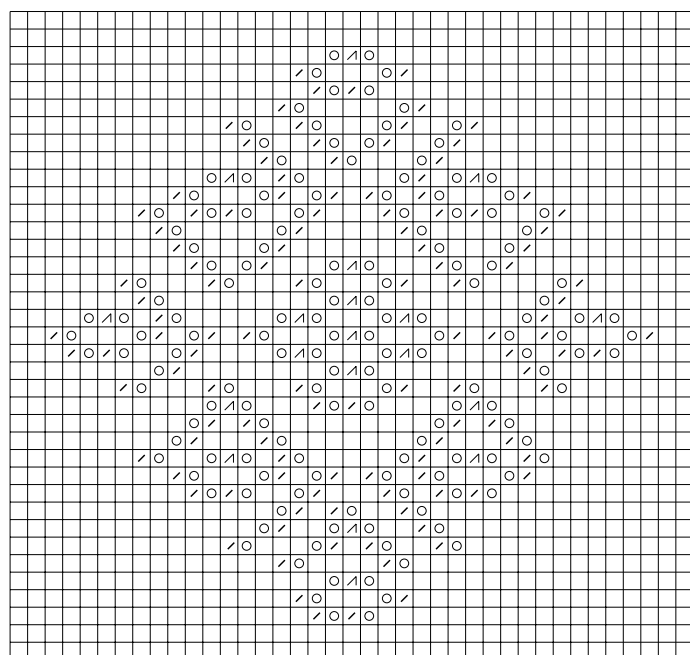
This snowflake is comprised of diagonals, mouse prints, and a large strawberry.



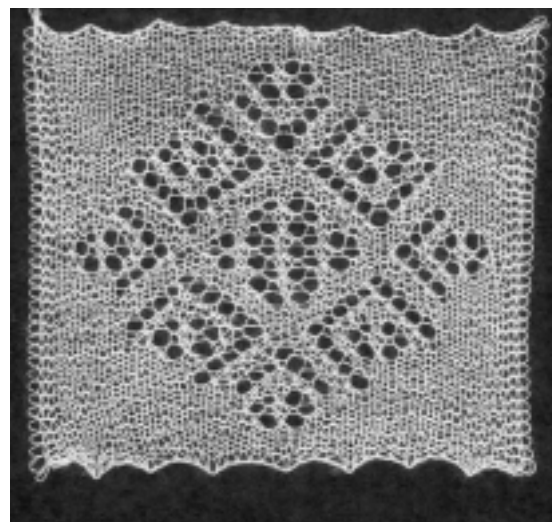
Right-side rows shown.
Knit all wrong-side rows.



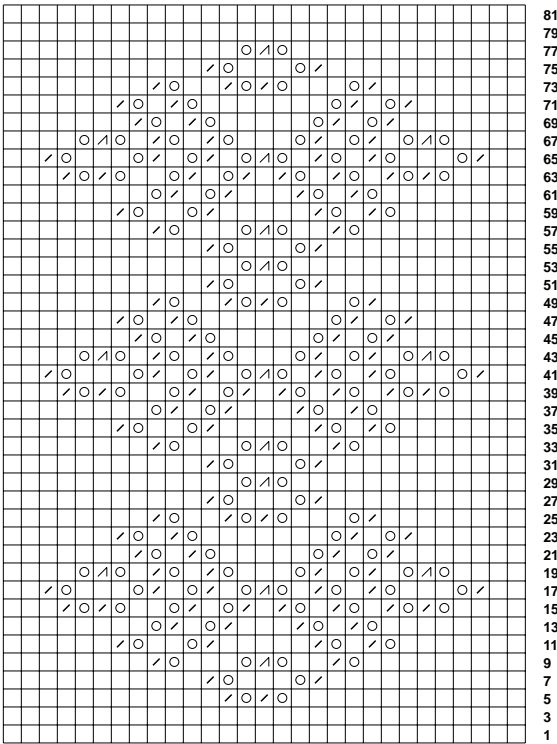
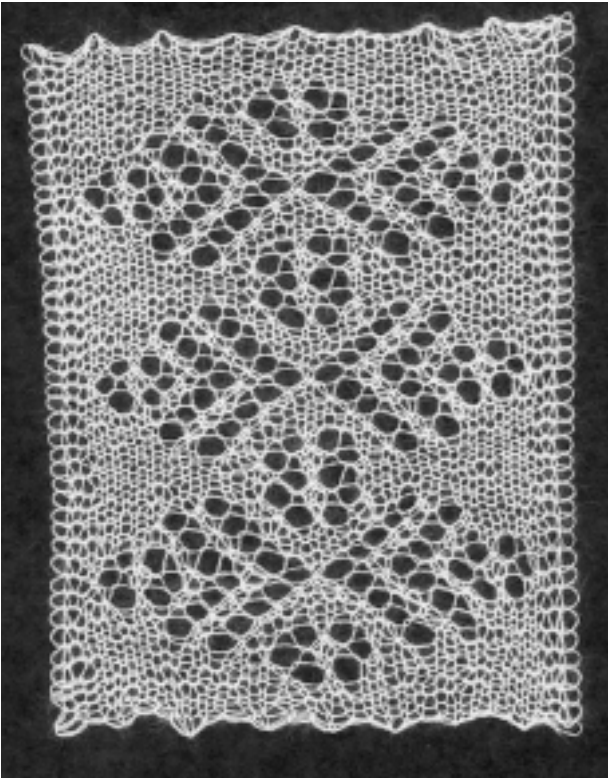
Olga Fedorova used this combination of diagonals and strawberries for a border of a shawl made in 1972 and now in the collection of the Orenburg Museum.



Right-side rows shown.
Knit all wrong-side rows.

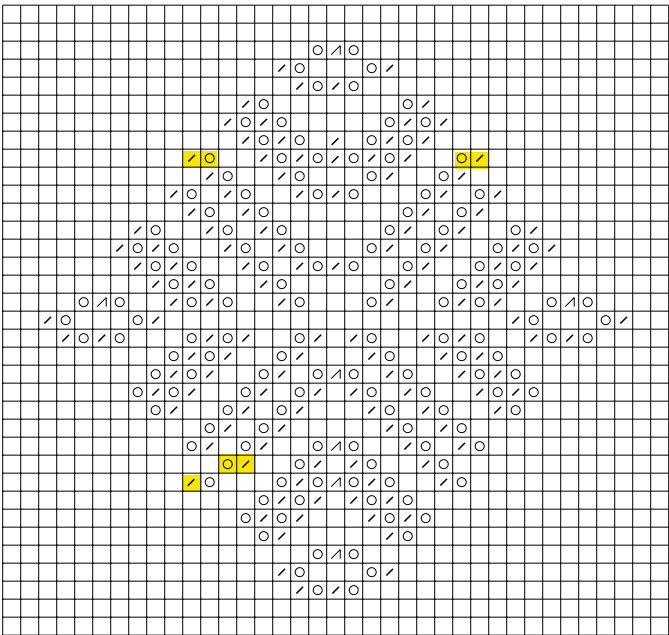


Large strawberries are combined with diagonals to create a “bowtie” pattern.

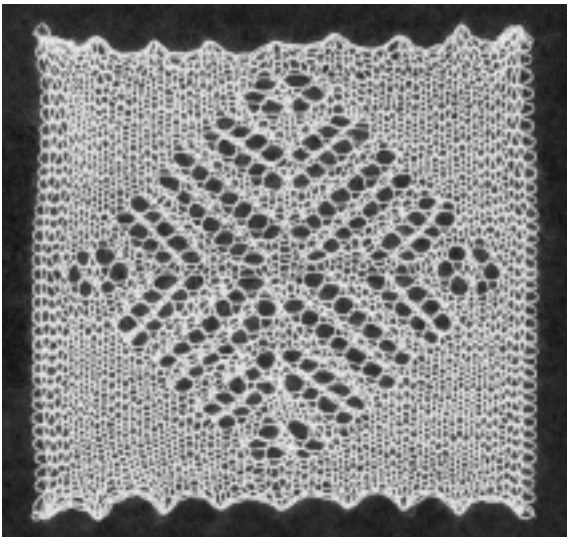


Right-side rows shown.
Knit all wrong-side rows.

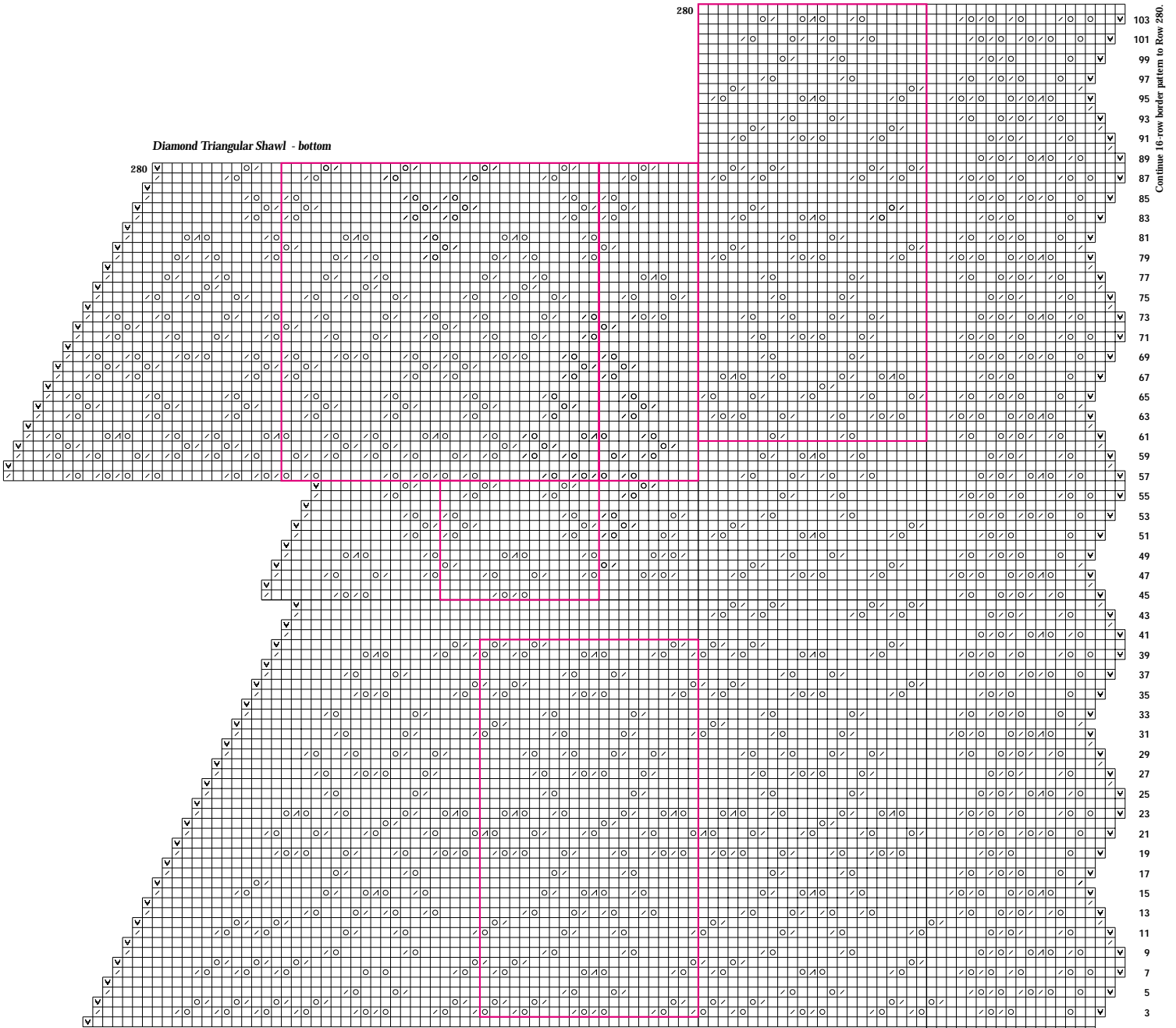
Diagonals and strawberries are used to form another version of the “bowtie.”



Right-side rows shown.
Knit all wrong-side rows.

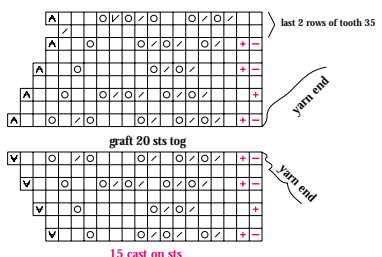


Diamond Triangular Shawl - bottom

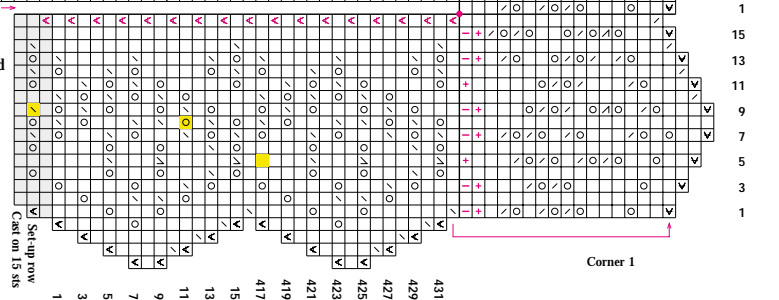


Continue 16-row border pattern to Row 280.

Corner 3

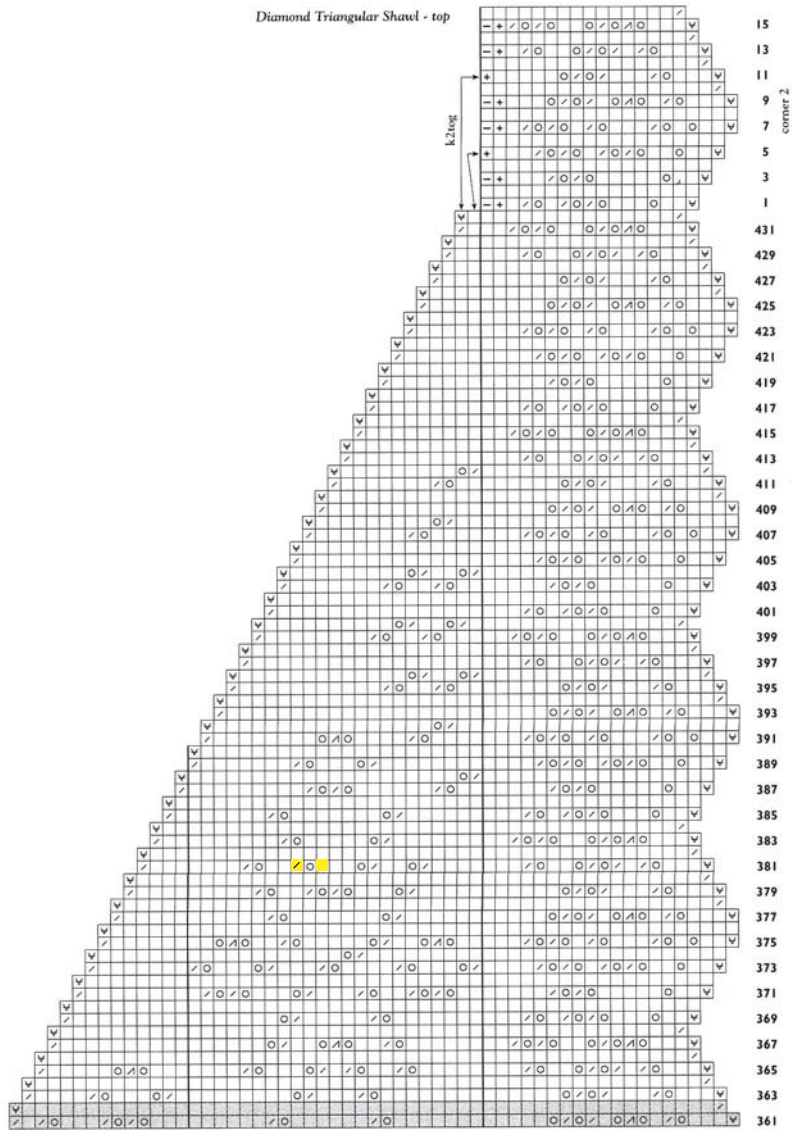


After corner 1, pick up 217 slipped sts to marker. Knit 1 row in back of each loop, turn, slip 1, knit to end slipping marker-234 sts.

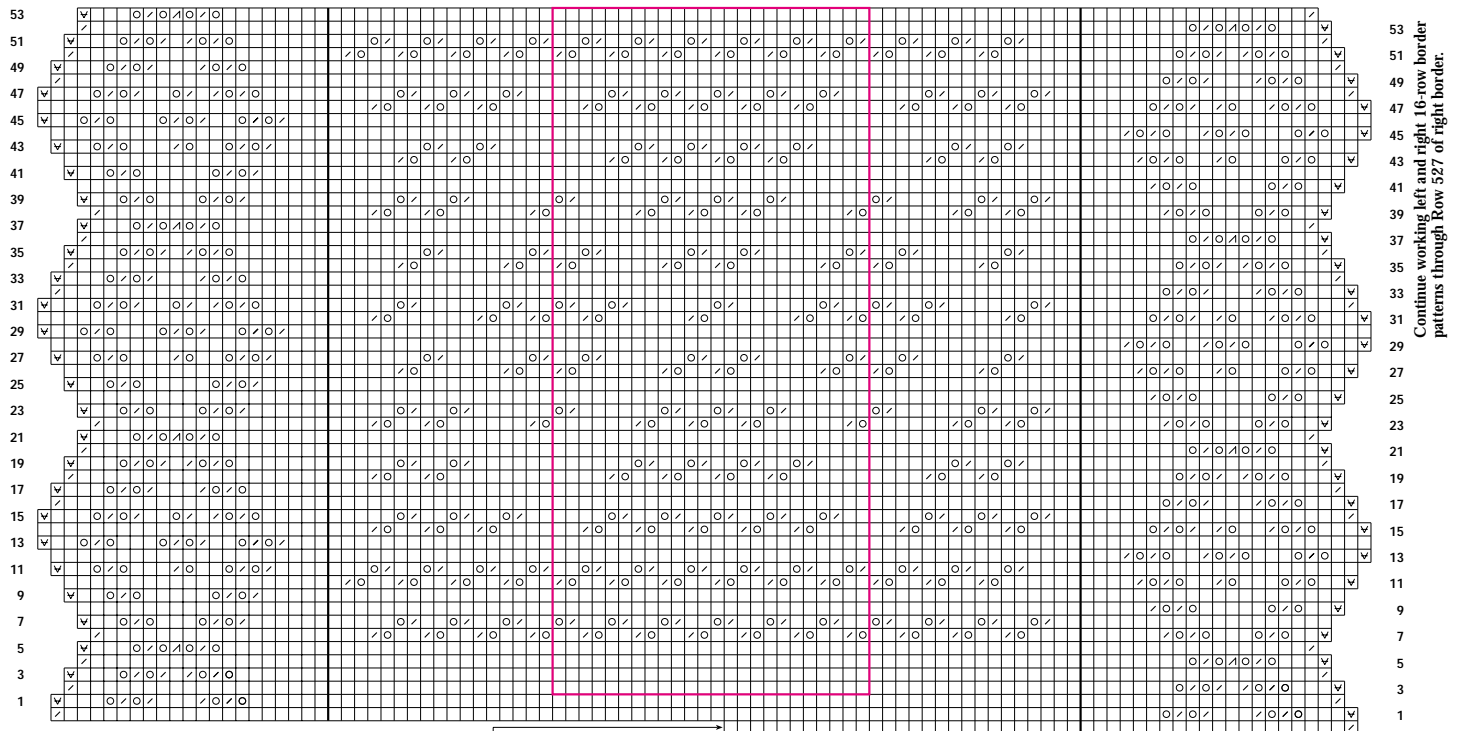


First (Rows 1-16) and twenty-seventh (Rows 417-432) teeth shown. Corner 1: Turn using short rows.

Diamond Triangular Shovel - top



Medallion Square Shawl - bottom



Continue working left and right 16-row border patterns through Row 527 of right border.

First (Rows 1–16) and thirty-fourth (Rows 529–544) teeth shown. Turn corner 1 using short rows. Pick up 272 slipped loops to marker. Knit one row in back of each picked-up loop plus one stitch (*) in cast-on stitches—273 stitches. Pick up 17 stitches along cast-on edge. Knit and increase 1 stitch—18 stitches. Work corner 2 using short rows—273 body stitches plus 44 border stitches—294 stitches. Work left border, knit across 273 body stitches (no decreases), work right border—294 stitches total. Following chart, complete Corners 1 and 2. Work to pattern repeat box, work stitches in pattern repeat box 11 times, work to end of row. Follow subsequent charts until Row 542.

