

Classic Lily of the Valley Scarf with Three Edge Variations

by Nancy Bush



all photos Joe Hancock

YARN:

Jamieson's Shetland Ultra Laceweight (50% Shetland wool, 50% lambswool; 212 yd [194 m]/25 g): natural white #104
Garter edge: 2 balls
Traditional sewn edge: 4 balls
Modern picked-up edge: 4 balls

NEEDLES:

Size 3 (3.25 mm): 10" (25.5 cm) straight wooden needles for all scarves, plus 24" (60 cm) circular (cir) for traditional sewn and modern picked-up edge scarves. Adjust needle size if necessary to obtain the correct gauge.

NOTIONS:

Garter edge: Markers (m)
Traditional sewn edge: Markers (m); G/7 (4.5 mm) crochet hook, cotton waste yarn for provisional CO.
Modern picked-up edge: 4 markers (m; 3 in same color, 1 in contrasting color); G/7 (4.5 mm) crochet hook, cotton waste yarn for provisional CO.

FINISHED SIZE:

Garter edge: About 9¼" (23.5 cm) wide and 47½" (120.5 cm) long.
Traditional sewn edge: 13¼" (33.5 cm) wide and 51½" (131 cm) long, measured at deepest points of edging.
Modern picked-up edge: 15¼" (38.5 cm) wide and 53½" (136 cm) long, measured at deepest points of edging.
Note: All measurements are relaxed, after blocking.

GAUGE:

10½ sts and 14 rows = 2" (5 cm) in pattern from Lily of the Valley chart, relaxed after blocking.

SKILL LEVEL:

Intermediate ●●●

Classic Lily of the Valley Scarf ©Interweave Press LLC. Not to be reprinted. All rights reserved.



INTERWEAVE, publishers of *Interweave Knits* magazine...join the online knitting community at KnittingDaily.com
Visit InterweaveStore.com/knittingpatterns for more great patterns!



CLASSIC LILY OF THE VALLEY SCARF

NANCY BUSH

WITH THREE EDGE VARIATIONS

STITCH GUIDE

Slipped-Stitch Selvedge: Sl 1 pwise with yarn in front (wyf), work to end. Slip the first st at beg of every row in this manner, except for the very first knit row.

5-Stitch Nupp: Working very loosely, work [k1, yo, k1, yo, k1] all in same st—5 nupp sts made from 1 st. On the foll row, purl the 5 nupp sts tog as shown on chart—5 nupp sts dec'd back to 1 st.

Sl 1, K2tog, Psso: Sl 1 st kwise with yarn in back, k2tog, pass slipped st over—2 sts dec'd.

Picking up Selvedge Stitches: Pick up and knit sts along the sides of a center piece at a ratio of approximately 3 sts for every 2 slipped selvedge sts. To do this, *pick up 1 st under both loops of the first selvedge st, pick up 1 st under just the back loop of the next selvedge st, then pick up 1 st under both loops of the same selvedge st; rep from * along the entire edge. You will end up with about one-third more picked-up sts than slipped selvedge sts.

Finished Sizes

Garter edge: About 9¼" (23.5 cm) wide and 47½" (120.5 cm) long.

Traditional sewn edge: 13¼" (33.5 cm) wide and 51½" (131 cm) long, measured at deepest points of edging.

Modern picked-up edge: 15¼" (38.5 cm) wide and 53½" (136 cm) long, measured at deepest points of edging.

Note: All measurements are relaxed, after blocking.

Yarn Jamieson's Shetland Ultra Laceweight (50% Shetland wool, 50% lambswool; 212 yd [194 m]/25 g): natural white #104

Garter edge: 2 balls

Traditional sewn edge: 4 balls

Modern picked-up edge: 4 balls

Needles Size 3 (3.25 mm): 10" (25.5 cm) straight wooden needles for all scarves, plus 24" (60 cm) circular (cir) for traditional sewn and modern picked-up edge scarves. Adjust needle size if necessary to obtain the correct gauge.

Notions

Garter edge: Markers (m)

Traditional sewn edge: Markers (m); G/7 (4.5 mm) crochet hook, cotton waste yarn for provisional CO.

Modern picked-up edge: 4 markers (m; 3 in same color, 1 in contrasting color); G/7 (4.5 mm) crochet hook, cotton waste yarn for provisional CO.

Gauge 10½ sts and 14 rows = 2" (5 cm) in pattern from Lily of the Valley chart, relaxed after blocking.

GARTER EDGE SCARF

Using the knitted method (refer to DVD or see page 23 of Knitted Lace of Estonia), CO 48 sts. Knit 1 row across all sts. Beg working slipped-st selvedge (see Stitch Guide) and knit 7 rows, beg and ending with a WS row—4 garter ridges.

Next row: (RS) Sl 1, k3, place marker (pm), work Row 1 of Lily of the Valley chart over center 40 sts, pm, k4. Working 4 sts outside m at each side in garter st and slipping first st of every row, work Rows 2-14 once, then rep Rows 1-14 of chart 22 more times—322 chart rows total. Slipping first st of every row, knit 8 rows, ending with a WS row—4 garter ridges. Knit 1 more RS row. BO all sts on WS using the k2tog method (refer to DVD or see page 27 of Knitted Lace of Estonia).

FINISHING

Wash the completed scarf in mild soap and warm water and block to slightly larger than finished measurements, using blocking wires to keep all edges straight and even. When dry, carefully weave in loose ends.

TRADITIONAL SEWN EDGE SCARF

Notes: The center rectangle is worked as for the Garter Edge Scarf. The two lace edge pieces are worked separately and sewn to the center section during finishing. The selvedges of the lace edges are worked in garter stitch, without slipping any stitches. **Center:** Work as for Garter Edge Scarf (pattern previous to this one). **Lace edge:** With yarn doubled and using the knitted method (refer to DVD or see page 23 of Knitted Lace of Estonia), CO 311 sts. Cut off one strand

of yarn and cont with a single strand only. Knit 2 rows. Work Rows 1-10 of Sewn Edge chart, then knit 1 RS row. BO all sts on WS using the k2tog method (refer to DVD or see page 27 of Knitted Lace of Estonia). Make a second lace edge the same as the first.

FINISHING

Sew the BO side of each lace edge piece along one short and one long side of the center rectangle (refer to DVD or see pages 30-32 of Knitted Lace of Estonia). Sew the short selvedges of the lace edge pieces tog carefully at the two corners where they meet using rem yarn ends. Wash the completed scarf in mild soap and warm water and block to slightly larger than finished measurements, pinning out each point, and keeping sides straight and even. When dry, carefully weave in loose ends.

MODERN PICKED-UP EDGE SCARF

Notes: The center rectangle is worked as for the Garter Edge Scarf, except that it begins with a provisional CO and is BO at the end. Sts for the lace edge are picked up and knit around all four sides of the center section and worked outward.

Center: With crochet hook and cotton waste yarn, work a crochet chain about 60 sts long. Tie a knot in the end of the cotton after the last chain to identify this end easily later. With straight needles and working yarn, pick up and knit 48 sts from the center 48 "bumps" along the back of the crochet chain (refer to DVD or see page 37 of Knitted Lace of Estonia). Knit 1 row across all sts. Beg working slipped-st selvedge (see Stitch Guide) and knit 7 rows, beg and end-

Classic Lily of the Valley Scarf ©Interweave Press LLC. Not to be reprinted. All rights reserved.



INTERWEAVE, publishers of *Interweave Knits* magazine...join the online knitting community at KnittingDaily.com
Visit InterweaveStore.com/knittingpatterns for more great patterns!

ing with a WS row. Working 4 sts outside m at each side in garter st and slipping first st of every row, work 322 rows in patt from Lily of the Valley chart over center 40 sts as for garter edge scarf. Slipping first st of every row, knit 8 rows, ending with a WS row. Edging: With RS still facing and cir needle, knit 1 row and inc 14 sts evenly—62 sts. With RS still facing, place marker (pm; 1 of 3 in same color), pick up and knit 252 sts along one long side of center section, adjusting the st count so you end the side with exactly 252 sts (see Stitch Guide, and also refer to DVD or pages 33-37 of Knitted Lace of Estonia). Beg at knotted end, carefully remove the waste-yarn crochet chain, placing each live st on empty straight needle as it becomes free—48 sts from CO edge. With RS facing and cir needle, pm (1 of 3 in same color), knit across sts of CO edge inc and 14 sts evenly—62 sts along one short side of center section. With RS still facing, pm (1 of 3 in same color), then pick up and knit 252 sts along second long selvedge, pm (contrast color) for beg of rnd—628 sts; 252 sts along each side; 62 sts each at top and bottom; the st after each marker is a corner st. Purl 1 rnd. Note: When working Picked-up Edge chart, start each side at the beg of the chart with the corner st (shaded in gold). Establish patt from Rnd 1 of chart as foll: *K1 (corner st), yo, rep marked 10-st patt to 1 st before next m, k1, yo; rep from * 3 more times for rem 3 sides of scarf—1 st inc'd on each side of all 4 corner sts. Work Rnds 2-16 of chart—700 sts after completing Rnd 9; 270 sts along each side; 80 sts each at top and bottom. Join a second strand of yarn and loosely BO all sts with 2 strands held tog using the k2tog method (refer to DVD or see page 27 of Knitted Lace of Estonia).

FINISHING

Wash the completed scarf in mild soap and warm water and block to slightly larger than finished measurements, pinning out each point, and keeping sides straight and even. When dry, carefully weave in loose ends.



Detail of Lily of the Valley pattern.



Modern picked-up edge.



Traditional sewn-on edge.

RISK-FREE TRIAL OFFER



Discover knitwear designs that will capture your imagination.

Take advantage of this special risk-free offer today!

interweave.com/go/kdiwk

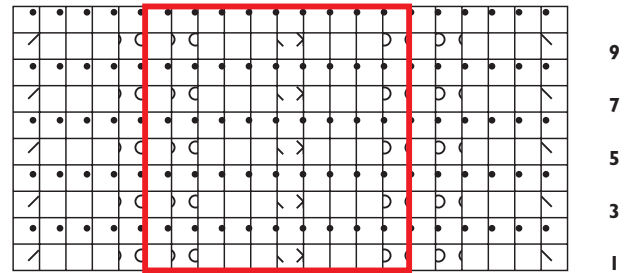
Classic Lily of the Valley Scarf ©Interweave Press LLC. Not to be reprinted. All rights reserved.



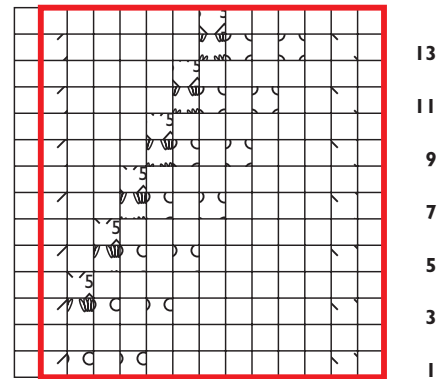
INTERWEAVE, publishers of *Interweave Knits* magazine...join the online knitting community at KnittingDaily.com
Visit InterweaveStore.com/knittingpatterns for more great patterns!

- k on RS and all rnds; p on WS
- p on RS and all rnds; k on WS
- yo
- / k2tog
- \ sl 1, k1, psso
- > sl 1, k2tog, psso (see Stitch Guide)
- ⌞ 5-st nupp (see Stitch Guide)
- 5 p5tog
- pattern repeat

Sewn Edge

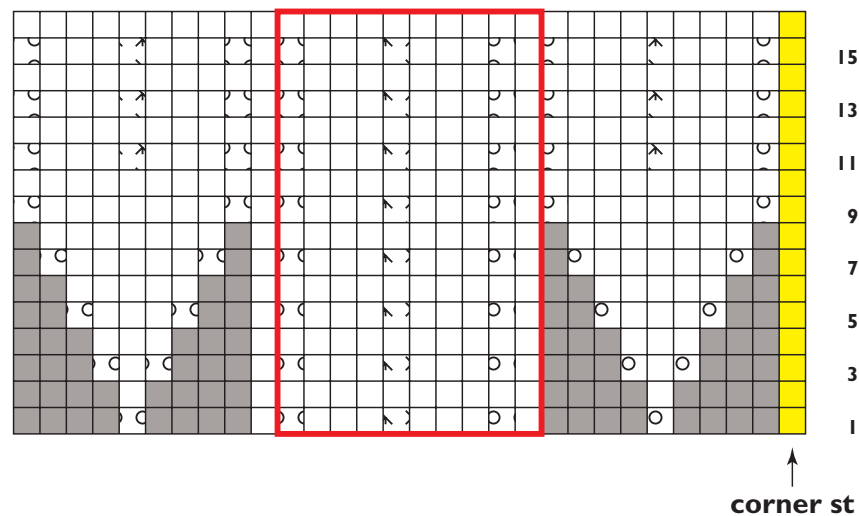


Lily of the Valley



pattern repeat:
multiple of 13 sts + 1, and 14 rows

Picked-up Edge



Classic Lily of the Valley Scarf ©Interweave Press LLC. Not to be reprinted. All rights reserved.