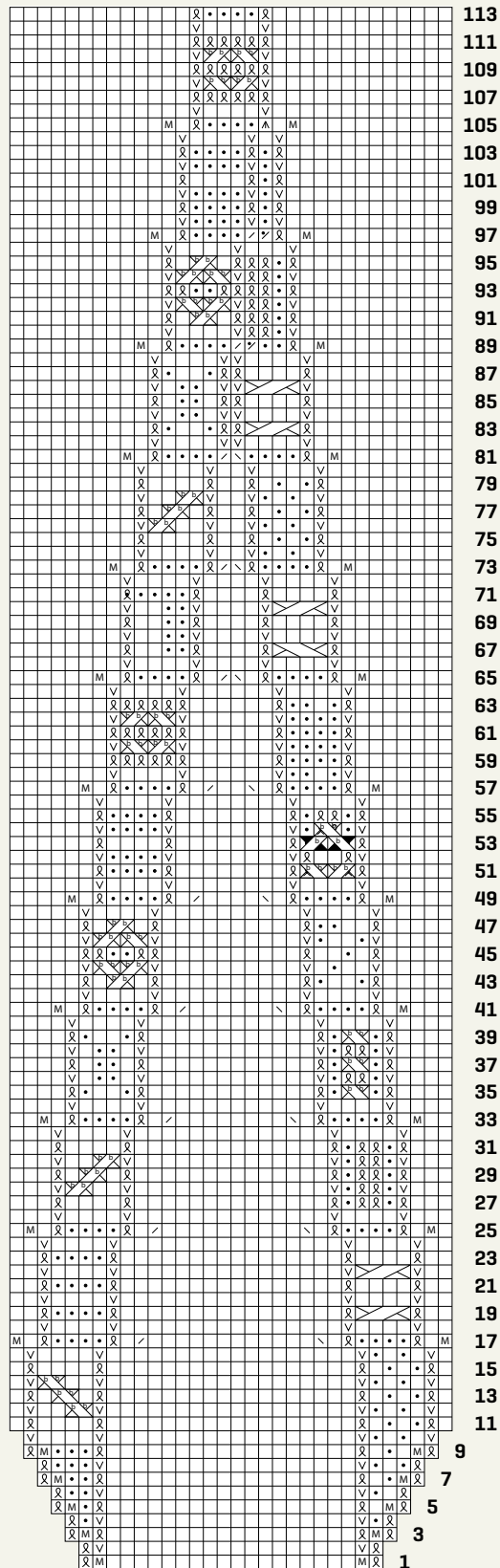
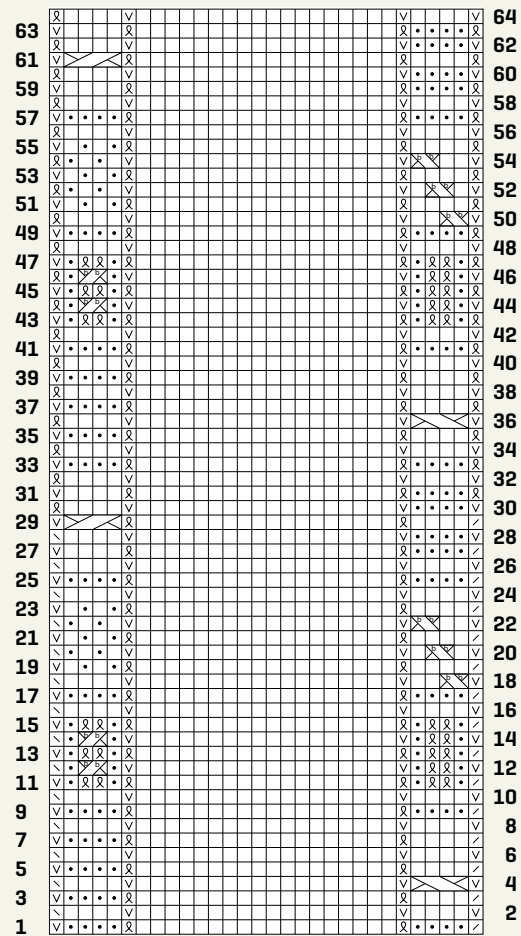


Instep



Heel



Toe

Using Judy's Magic Cast On (see Techniques), CO 24 sts—12 sts on each of 2 dpn. Divide sts over 3 dpn as foll: 12 sts on Needle 1 for instep and 6 sts each on Needles 2 and 3 for sole. Pm for beg of rnd and join to work in the rnd.

Knit 1 rnd.

INC RND: On Needle 1: k1, M1, knit to last st, M1, k1; on Needle 2: k1, M1, knit to end; on Needle 3: knit to last st, M1, k1—4 sts inc'd.

Rep the last 2 rows 3 more times—40 total sts; 20 sts on Needle 1, 10 sts each on Needles 2 and 3.

Knit 1 rnd.

EST PATT: On Needle 1: work Instep chart; on Needle 2: k1, M1, knit to end; on Needle 3: knit to last st, M1, k1—4 sts inc'd.

NEXT RND: On Needle 1: work Instep chart; on Needles 2 and 3: knit.

Rep the last 2 rnds 4 more times, ending after Rnd 10 of chart—60 total sts; 30 sts on Needle 1, 15 sts each on Needles 2 and 3.

Place 1 st from beg of Needle 2 onto Needle 1, and 1 st from end of Needle 3 onto Needle 1—32 sts on Needle 1, 14 sts each on Needles 2 and 3.

Size 8½" only:

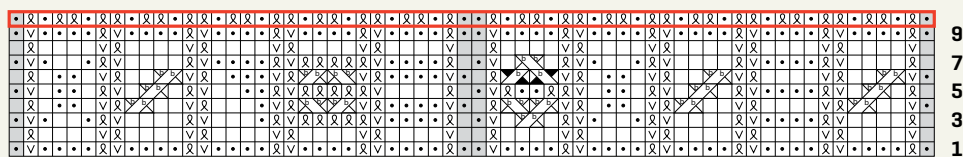
Inc on Sole only as foll:

NEXT RND: On Needle 1: work Instep chart; on Needle 2: M1, knit to end; on Needle 3: knit to end, M1—2 sts inc'd.

NEXT RND: On Needle 1: work Instep chart; on Needles 2 and 3: knit.

Rep the last 2 rnds once more—64 sts total; 32 sts on Needle 1, 16 sts each on Needles 2 and 3.

Cuff



□ knit on RS, purl on WS

• purl on RS, knit on WS

⊠ knit tbl on RS, purl tbl on WS

▽ sl st pwse wyb on RS, wyf on WS

Ⓜ M1

↖ ssk

⊞ k2tog on RS, p2tog on WS

⊞ p2tog

Ⓢ s2kp

⊞ sl 1 st onto cn and hold in back, k1tbl, k1tbl from cn

⊞ sl 1 st onto cn and hold in front, k1tbl, k1tbl from cn

⊞ sl 1 st onto cn and hold in back, k1tbl; p1 from cn

⊞ sl 1 st onto cn and hold in front, p1; k1tbl from cn

⊞ sl 2 sts onto cn and hold in back, k2, k2 from cn

⊞ sl 2 sts onto cn and hold in front, k2, k2 from cn

□ size 8" no stitch; size 8½" knit

• size 8" no stitch; size 8½" purl

⊞ row repeat