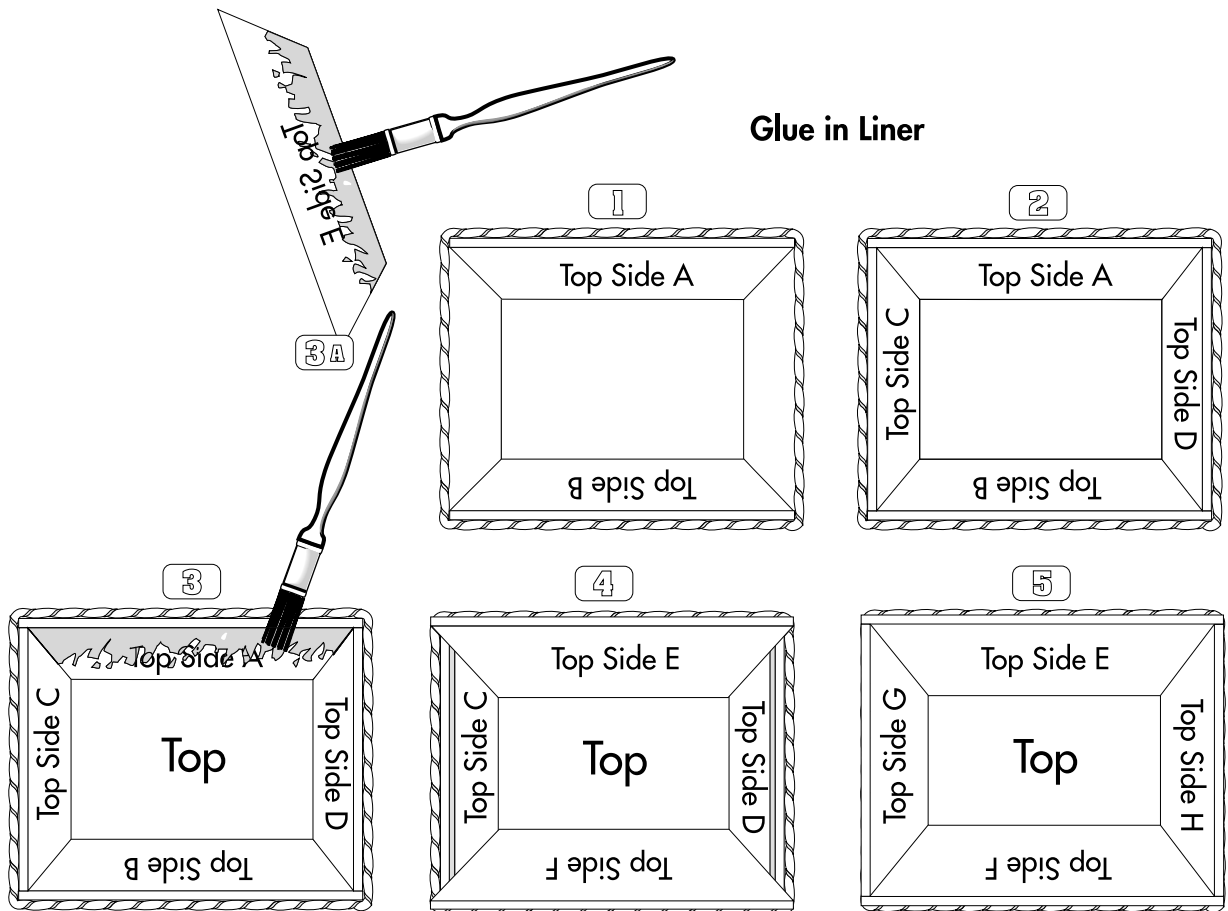


Cuts #1, 2, 3, and 4 should start and end about 1/4" from the edge of the matboard. Starting with cut #1, use a series of strokes to cut all the way through. Then continue with cuts #2, 3 and 4. Cuts #5, 6 and 7 should only be cut through partially. Once these cuts have been made, go back and cut all the way through. Then cut away the excess on the part labeled "top".



LINER PATTERNS

Actual size

