



C A L E N D A R

EXHIBITIONS



Shines With the Galaxy by Yukie Kawabata. Quilted. Japan. Part of the Pacific International Quilt Festival at the Santa Clara Convention Center, Santa Clara, California. Photograph courtesy of Mancuso Show Management.

Call for Entries. March 23–April 28, 2007. Needle Art in the Twenty-First Century, at the Textile Center, Minneapolis, Minnesota. Entry deadline: November 17. (612) 436-0464; info@textilecentermn.org.

Call for Entries. April 11–15, 2007. The Beaded Bag, at Beadwork Bead Expo, Oakland Convention Center, Oakland, California. Entry deadline: January 12. www.interweave.com/ bead/events/beaded_bags/submissions.asp.

Placerville, California. September 30–October 1. A Season's Bounty of Quilts, at El Dorado County Fairgrounds. Joan, (530) 644-5511; jbmartin@internet49.com.



Housetop, sixteen-block variation quilt by Geardine Westbrook. Collection of the Tinwood Alliance. Part of Gee's Bend: The Architecture of the Quilt, at the Indianapolis Museum of Art, Indianapolis, Indiana.

Photograph courtesy of the Indianapolis Museum of Art. Photograph by Stephen Pitkin, Pitkin Studio, Rockford, Illinois.

Sonora, California. September 16–17. Seventeenth Annual Quilts and Threads Show, at Mother Lode

Fairgrounds. Nancy Bertuccelli, (209) 533-3738; www.sierraquiltguild.com.

Englewood, Colorado. October 25–28. Annual Fiber Art Sale, at the Englewood Civic Center. Shelly DeChantal, (303) 759-9505; www.rmweaversguild.org.

Hartford, Connecticut. September 23–February 25. Crewel World, crewel work embroidery, at the Wadsworth Atheneum. (860) 278-2670; www.wadsworthatheneum.org.

Jacksonville, Florida. September 22–24. Quilting Circles: Bringing Friends Together, at the Prime Osborn Convention Center. (904) 298-1371; www.quiltfestjax.com.

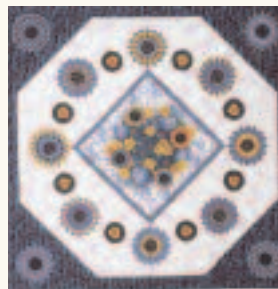
Flossmoor, Illinois. October 14. Weavings and Diversities, show and sale, at the Flossmoor Community House. Ginny, (708) 747-9246.

Fishers, Indiana. October 10–December 22. Quilts from the Ruth Allison Lilly Collection, at Conner Prairie Museum. (317) 776-6000; www.connerprairie.org.

Indianapolis, Indiana. October 8–December 31. Gee's Bend: The Architecture of the Quilt, at the Indianapolis Museum of Art. (317) 920-2660; www.ima-art.org.

Lexington, Massachusetts. October 14–15. Nineteenth Annual Quilt Show and Sale, at Cary Memorial Building. www.risingstarquilters.org.

St. Paul, Minnesota. September 23–January 7. American Fashion Transformed: Four Master Designers, at the Goldstein Museum of Design. (612) 624-7434; http://goldstein.che.umn.edu.



Come To the Table by Janet Fogg. Quilted. Part of the Pennsylvania National Quilt Extravaganza XIII at the Pennsylvania Farm Show Complex, Harrisburg, Pennsylvania. Photograph courtesy of Mancuso Show Management.

Chesterfield, Missouri. September 15–16. Twenty-Fifth Annual Quilt Show, at the United Methodist Church of Green Trails. Marilyn Donovan, (314) 434-9052; mdonov@aol.com.

Nebraska City, Nebraska. September 16–17. Twenty-Third Annual Quilt and Needlework Show, at Memorial Building. (402) 873-6046. PO Box 576, Nebraska City, NE 68410.

Beacon, New York. September 13–17. Art of the Needle 2006, sixteenth biennial exhibition, at Mount Gulian Historic Site. Lynn Schamberger, (845) 471-0876; lschamberger@hvr.rr.com.

Hammondsport, New York. September 22–November 5. Hand Wrought: An Embroidery Art Exhibit, needlework by Finger Lakes artists, at the Glenn H. Curtiss Museum. (607) 569-2160; www.corningega.org.

New York, New York. Through September 4.

Please send your event information at least four months before the month of publication. Listings are made as space is available. Although we try to include as many events as possible, we cannot guarantee that your listing will appear.

Anglo Mania: Tradition and Transgression in British Fashion, at the Metropolitan Museum of Art's Costume Institute. (212) 535-7710; www.metmuseum.org/works_of_art/departments.asp?dep=8.

New York, New York. September 9–December 16. Love and War: The Weaponized Woman, the influence of armor and other military styles on fashion, at the Museum at the Fashion Institute of Technology. (212) 217-7999; www.fitnyc.edu.

New Bern, North Carolina. October 6–7. Doorways to Discovery, juried quilt show, at the Knights of Columbus Hall. Ruth Powers, (252) 634-9470.

Cincinnati, Ohio. October 26–29. Quilt show and sale at the Cincinnati Nature Center. Robbie Porter, (513) 732-2459; beadworks24@hotmail.com.

Toledo, Ohio. September 23–24. Thirty-First Annual Needlework Show, at the Toledo Botanical Garden. Susan Pellitieri, (419) 382-1329; <http://members.aol.com/needleartstoledo/show2006.htm>.

Portland, Oregon. October 27–November 20. Contemporary basketry by Shannon Weber, at Guardino Gallery. (503) 281-9048; www.shannonweber.com.

Richmond, Virginia. Through December 3. Quilts of the Old Dominion, at the Virginia Historical Society. (804) 358-4901; www.vahistorical.org.

Toronto, Ontario, Canada. Through October 15. Continuum: Figurative Art by a Thread, forty textiles with figurative imagery, at the Textile Museum of Canada. (416) 599-5321; www.textilemuseum.ca.

SYMPOSIUMS
AND WORKSHOPS

Santa Clara, California. October 12–15. Pacific International Quilt Festival, at the Santa Clara Convention Center. (215) 862-5828; www.quiltfest.com.

Farmington, Connecticut. October 6–8. Twenty-Seventh Annual Seminar, American Quilt Study Group, at the Marriott Hartford Farmington Hotel. (402) 477-1181. www.h-net.org/~aqsg/.

Searsport, Maine. September 8–10. Fiber College on Penobscot Bay, at Searsport Shores Ocean Campgrounds. (207) 548-6059; www.fibercollege.com.

Mackinaw City, Michigan. September 22–23. Still Stitching with Susan, workshop with Susan Greening Davis, at the Clarion Inn. (989) 780-2025; www.susangreeningdavis.com.

Johnsonburg, New Jersey. September 29–October 1. Fibre Fallout 2006, at the Johnsonburg Conference Center. (908) 995-2365; www.northcountryspinners.org.

Hemlock, New York. September 16–17. Twelfth Annual Finger Lakes Fiber Arts Festival, at Hemlock Fairgrounds. Robin, (607) 522-4374; www.gvhg.org/fest.html.

New York, New York. October 7–8. Woven in Time: The Intimate Relationship between Costume and Jewelry Conference, at the Fashion Institute of Technology. (914) 636-3784; www.jewelryandrelatedarts.com.

Brasstown, North Carolina. Through October 21. Quilting classes, at the John

C. Campbell Folk School. (828) 837-2775; www.folkschool.org.

Fletcher, North Carolina. October 27–29. Southeastern Animal Fiber Fair, at the Western North Carolina Agriculture Center. Linda Brier, (828) 683-4026; www.saffsite.org.

Gettysburg, Pennsylvania. September 16–17 and October 21–22. Variations on a Sleeve and Collars, Cuffs and Undersleeves, respectively, workshops at Civil War accessories, at



Evening Out by Shelley Hauge Wong. Beaded. From *Beadwork Creates Beaded Bags* (Interweave Press, 2003). Part of *The Beaded Bag*, at Bead Expo, Oakland Convention Center, Oakland, California. Photograph courtesy of *Beadwork magazine*. Photograph by Joe Coca.



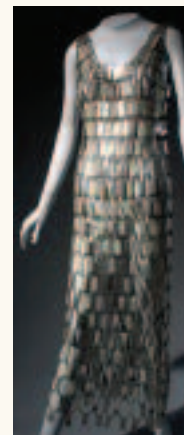
Bed furnishings. Maker unknown. Cream fustian with crewel embroidered tree forms, vines, and leaves. England. Circa 1700. Bequest of William B. Goodwin. (1950.890a-h). Part of *Crewel World*, at the Wadsworth Atheneum, Hartford, Connecticut. Photograph courtesy of the *Wadsworth Atheneum*.

the Genteel Arts Academy; (717) 337-0283; www.genteelarts.com.

Harrisburg, Pennsylvania. September 7–10. The Pennsylvania National Quilt Extravaganza XIII, at the Pennsylvania Farm Show Complex. (215) 862-5828; www.quiltfest.com.

Hershey, Pennsylvania. September 28–30. Chocolate Chipping Hershey Stitching Festival, at the Hershey Lodge and Convention Center. (702) 794-9412; www.stitchingfestival.com.

Wausau, Wisconsin. October 13–15. Fiber art classes during the thirty-second Wisconsin Spin In, at the Plaza. Dorothee, (715) 353-2287; www.wispinin2006.com.



Evening dress by Paco Rabanne. Pearlescent and silver plastic chain mail. France. Circa 1968. Gift of Montgomery Ward. Part of *Love and War: The Weaponized Woman*, at the Museum at the Fashion Institute of Technology, New York, New York. Photograph courtesy of the *Museum at FIT*. Photograph by Irving Solero.



Quilt, pattern unidentified, possibly Black Walnut or Butternut. Maker unknown. Quilted and appliquéd. Circa 1845. (CPM.1106). Part of Quilts from the Ruth Allison Lilly Collection, at Conner Prairie Museum, Fishers, Indiana. Photograph courtesy of Conner Prairie Museum.