

In “An Estonian Triangular Summer Shawl to Knit” by Nancy Bush in the July/August 2008 issue, Row 136 of the Center Section should read:

**Row 136: (WS) Sl 1, k3, k2tog, knit to last 6 sts, sl 1, k1, pssso.**

In addition, the illustration in the “Technique: K2Tog Bind-Off” labeled Figure 1 is the illustration for Figure 2; the illustration labeled Figure 2 is Figure 1. In the illustration for “Joining Lace Edge to Center,” the key, Center Chart 1, and Center Chart 2 were incorrect. Corrected versions are below.

T E C H N I Q U E

### K2Tog Bind-Off

Slip the first stitch, knit the second stitch, \*knit these 2 stitches together by inserting the left-hand needle into the front of them from left to right and knitting them together through their back loops with the right needle (Figure 1), then knit the next stitch (Figure 2); repeat from \* until all of the stitches are secured. Cut the working yarn and pull it through the last loop to secure the end of the bound-off stitches.

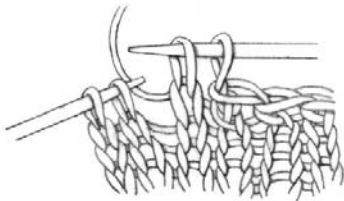
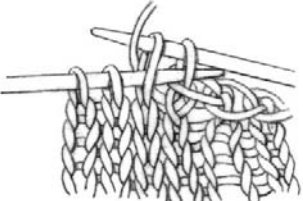



Figure 1

Figure 2

Key

- k on RS; p on WS
- p on RS; k on WS
- yo
- k2tog on RS; p2tog on WS
- sl 1, k1, pssso on RS; sl 1, p1, pssso on WS
- sl 1, k2tog, pssso
- 7-st nupp (see Stitch Guide)
- p7tog
- sl 1 pwise wyf
- patt rep

Joining Lace Edge to Center

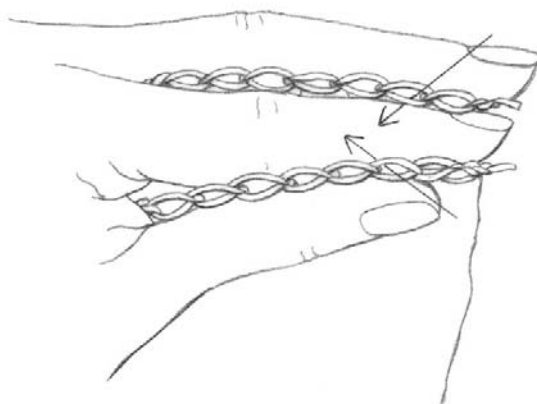
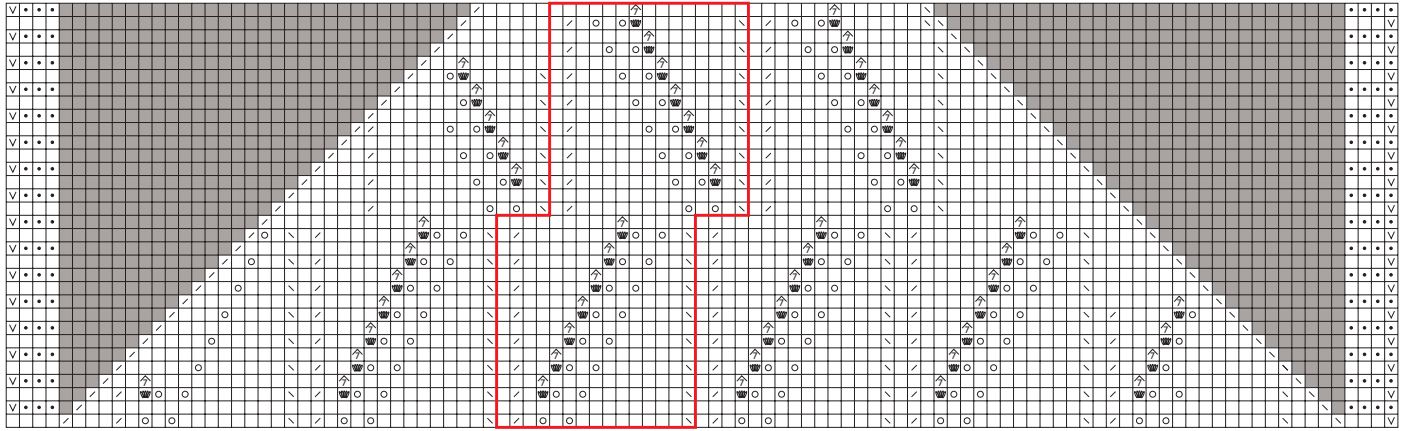


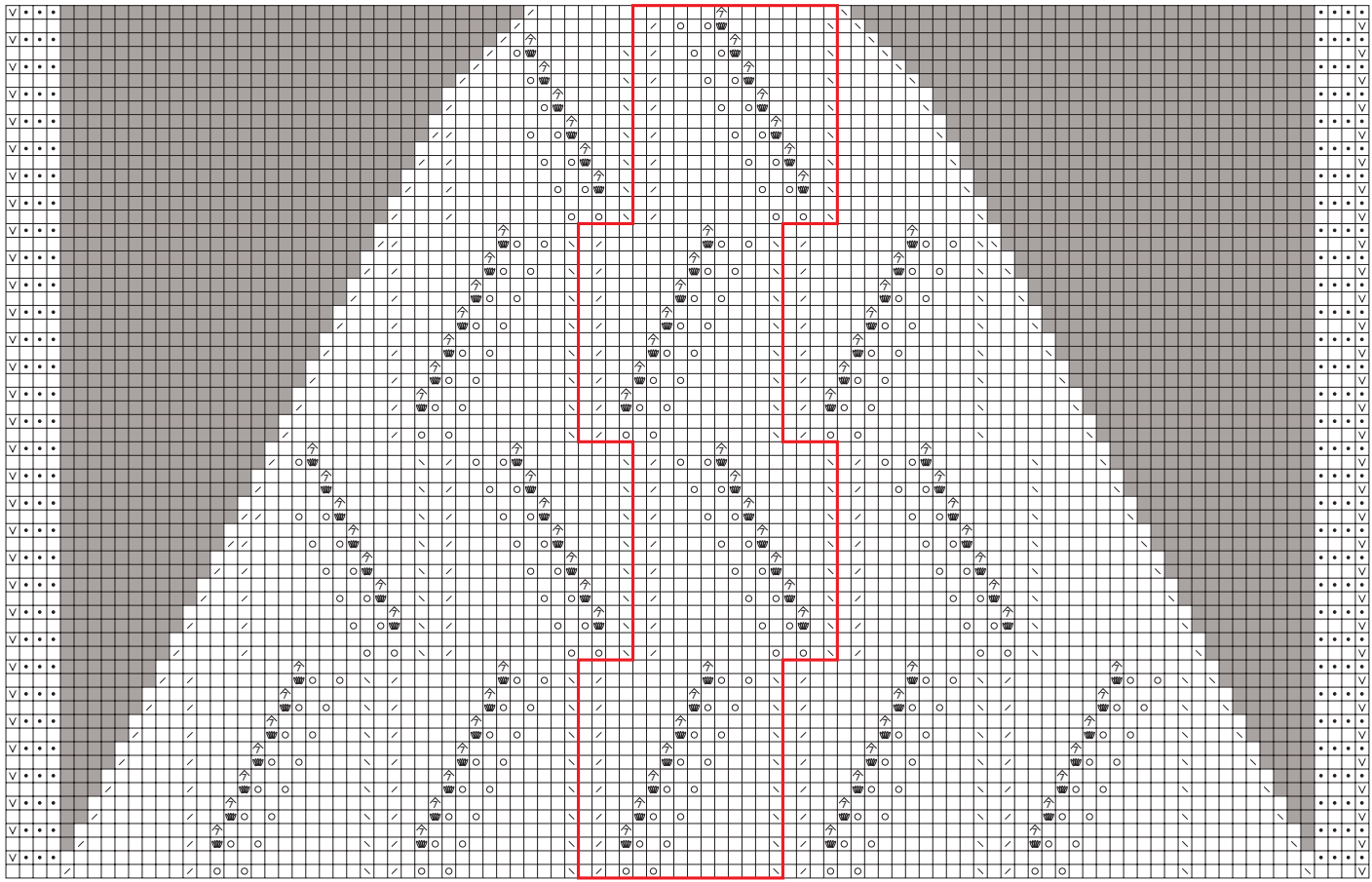
Figure 1 (arrows show the direction the threaded needle will go through each piece)

Center Chart 2



- 95
- 93
- 91
- 89
- 87
- 85
- 83
- 81
- 79
- 77
- 75
- 73
- 71
- 69
- 67
- 65

Center Chart 1



- 63
- 61
- 59
- 57
- 55
- 53
- 51
- 49
- 47
- 45
- 43
- 41
- 39
- 37
- 35
- 33
- 31
- 29
- 27
- 25
- 23
- 21
- 19
- 17
- 15
- 13
- 11
- 9
- 7
- 5
- 3
- 1