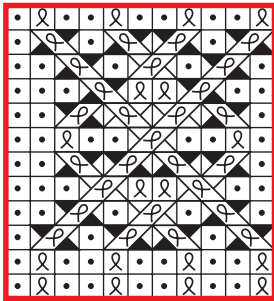


American Tunis Hat to Knit

KRISTI SCHUELER

Chart 1



Key








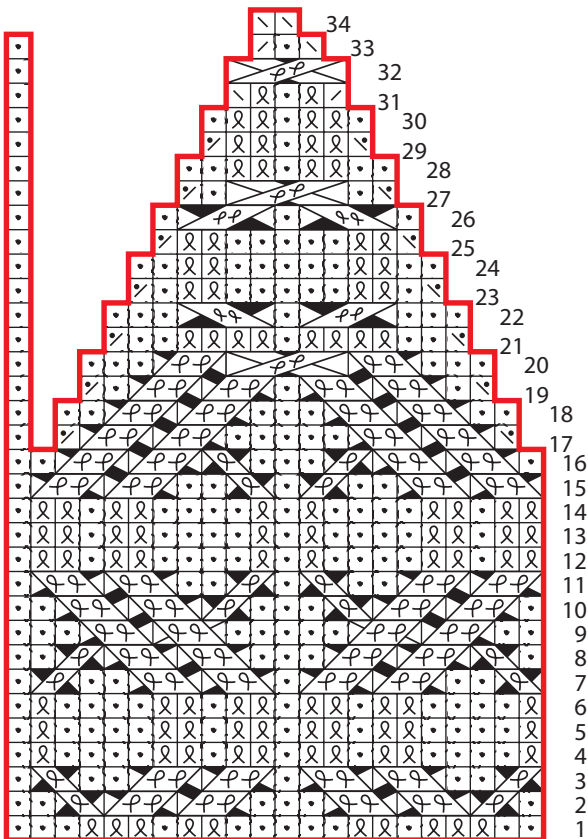






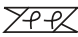
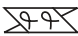



-  p
-  k1tbl
-  k2tog
-  ssk
-  p2tog
-  ssp
-  patt rep

Chart 2



-  sl 1 st onto cn, hold in back, k1tbl, p1 from cn
-  sl 1 st onto cn, hold in front, p1, k1tbl from cn
-  sl 1 st onto cn, hold in back, k1tbl, k1tbl from cn
-  sl 1 st onto cn, hold in front, k1tbl, k1tbl from cn
-  sl 1 st onto cn, hold in back, k2tbl, p1 from cn
-  sl 2 sts onto cn, hold in front, p1, k2tbl from cn
-  sl 1 st onto cn, hold in back, k2tbl, k1tbl from cn
-  sl 2 sts onto cn, hold in front, k1tbl, k2tbl from cn
-  sl 2 sts onto cn, hold in back, k2tbl, p2 from cn
-  sl 2 sts onto cn, hold in front, p2, k2tbl from cn
-  sl 2 sts onto 1st cn and hold in back, sl 1 st onto 2nd cn and hold in back, k2tbl, p1 from 2nd cn, k2tbl from 1st cn

Charts may be photocopied for personal use.