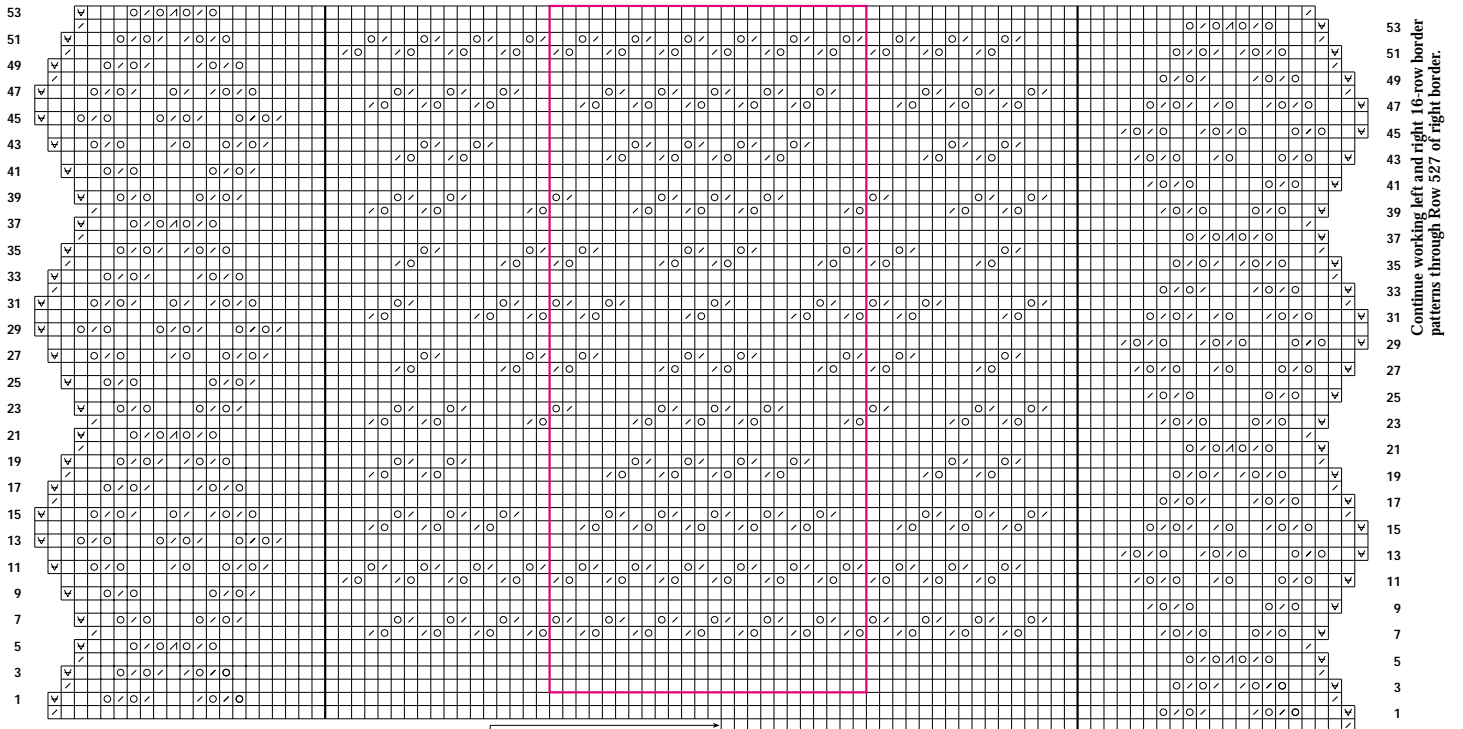


Medallion Square Shawl - bottom



Continue working left and right 16-row border patterns through Row 527 of right border.

First (Rows 1–16) and thirty-fourth (Rows 529–544) teeth shown. Turn corner 1 using short rows. Pick up 272 slipped loops to marker. Knit one row in back of each picked-up loop plus one stitch (*) in cast-on stitches—273 stitches. Pick up 17 stitches along cast-on edge. Knit and increase 1 stitch—18 stitches. Work corner 2 using short rows—273 body stitches plus 44 border stitches—294 stitches. Work left border, knit across 273 body stitches (no decreases), work right border—294 stitches total. Following chart, complete Corners 1 and 2. Work to pattern repeat box, work stitches in pattern repeat box 11 times, work to end of row. Follow subsequent charts until Row 542.

