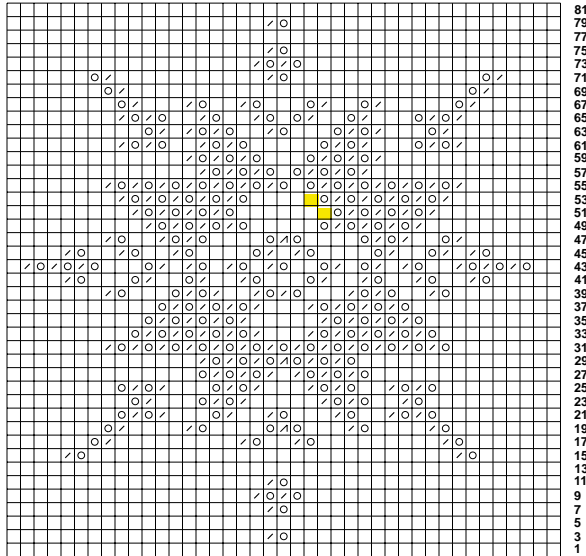
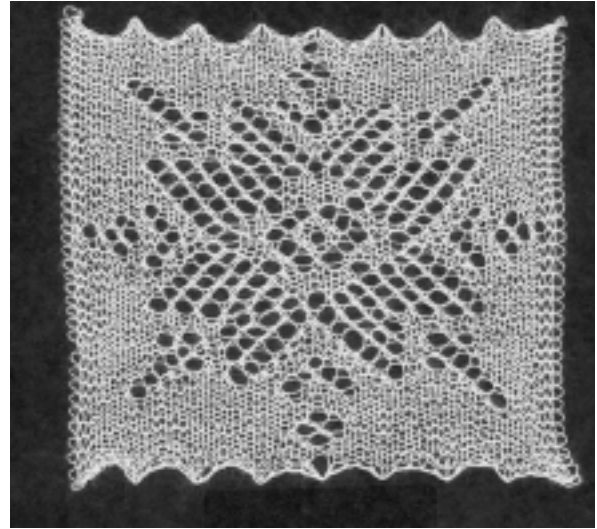


This snowflake is comprised of diagonals, mouse prints, and a large strawberry.

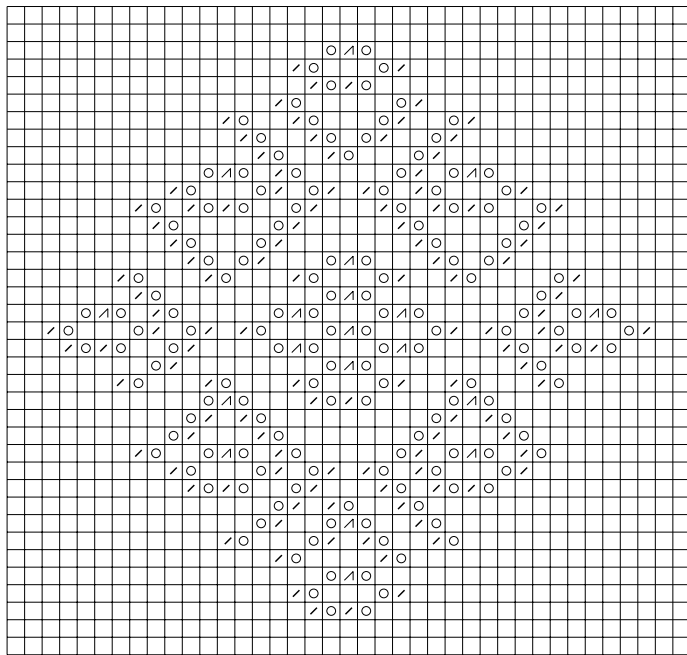


81  
79  
77  
75  
73  
71  
69  
67  
65  
63  
61  
59  
57  
55  
53  
51  
49  
47  
45  
43  
41  
39  
37  
35  
33  
31  
29  
27  
25  
23  
21  
19  
17  
15  
13  
11  
9  
7  
5  
3  
1

Right-side rows shown.  
Knit all wrong-side rows.

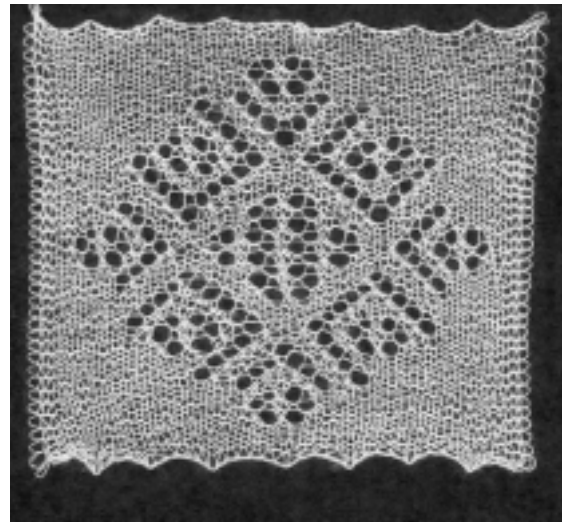


Olga Fedorova used this combination of diagonals and strawberries for a border of a shawl made in 1972 and now in the collection of the Orenburg Museum.

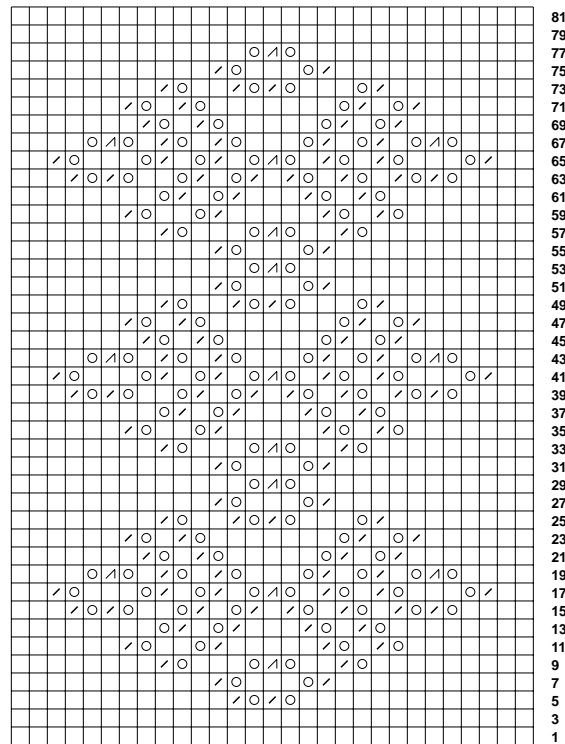
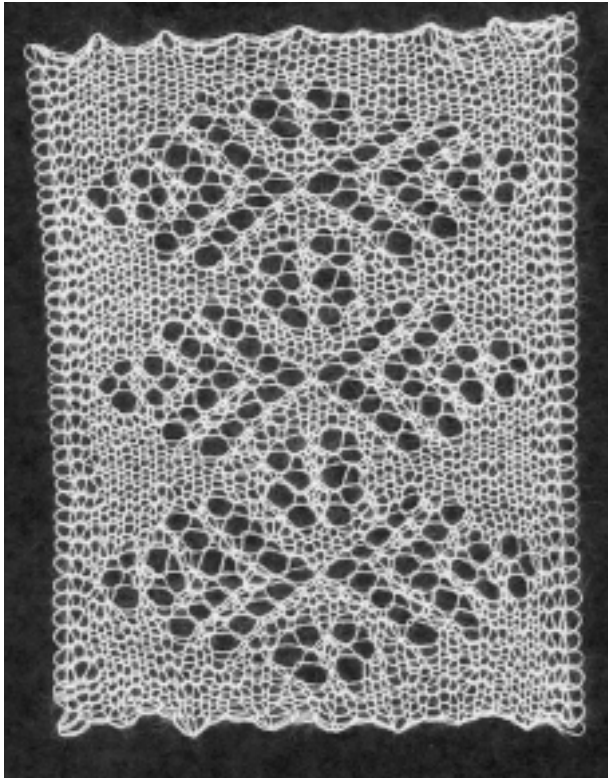


73  
71  
69  
67  
65  
63  
61  
59  
57  
55  
53  
51  
49  
47  
45  
43  
41  
39  
37  
35  
33  
31  
29  
27  
25  
23  
21  
19  
17  
15  
13  
11  
9  
7  
5  
3  
1

Right-side rows shown.  
Knit all wrong-side rows.

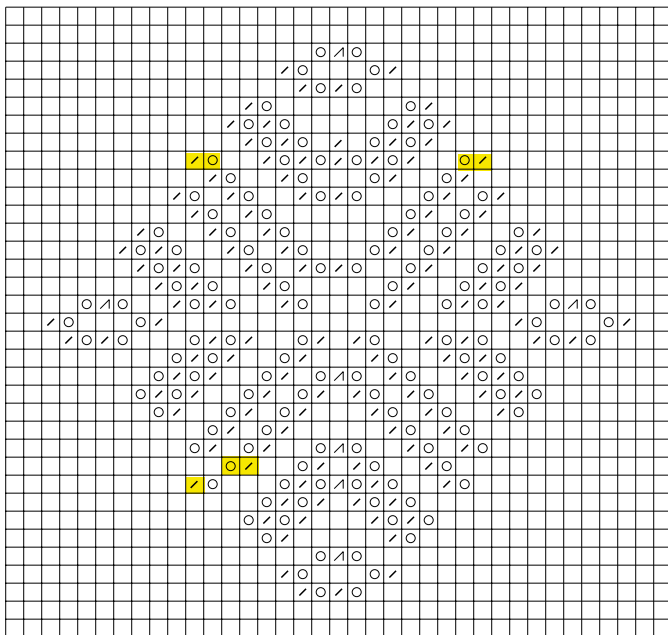


Large strawberries are combined with diagonals to create a “bowtie” pattern.



Right-side rows shown.  
Knit all wrong-side rows.

Diagonals and strawberries are used to form another version of the “bowtie.”



Right-side rows shown.  
Knit all wrong-side rows.

