

Arbor Lace with Tassels and Embroidery

(cast on multiple of 11 sts)

Row 1: (RS) *Ssk, [k1b] 3 times, yo, k1, yo, [k1b] 3 times, k2tog; rep from *.

Rows 2, 4, 6, and 8: Purl.

Row 3: *Ssk, [k1b] 2 times, yo, k1, yo, ssk, yo, [k1b] 2 times, k2tog; rep from *.

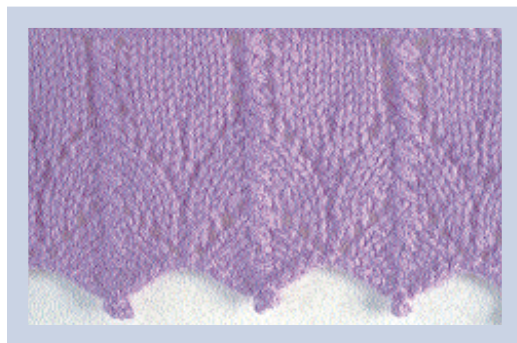
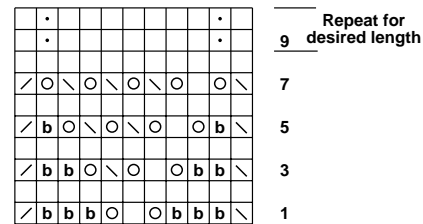
Row 5: *Ssk, k1b, yo, k1, [yo, ssk] 2 times, yo, k1b, k2tog; rep from *.

Row 7: *Ssk, yo, k1, [yo, ssk] 3 times, yo, k2tog; rep from *.

Row 9: *K1, p1, k7, p1, k1; rep from *.

Row 10: Knit the knits and purl the purls.

Rep Rows 9 and 10 for desired length. BO all sts. Make 4" (10-cm) tassel (page 221) for each point. Embroider diagonal straight st (page 192) over center 2 knit sts above each tassel.



Gazebo Lace

(cast on multiple of 10 sts + 1)

Bobble (MB): (p1, k1, p1) in next st, [turn, k1, p1, k1] 2 times, pass 2nd and 3rd st over 1st st.

Set-up row: (WS) *P5, MB, p4; rep from *, end last rep p5.

