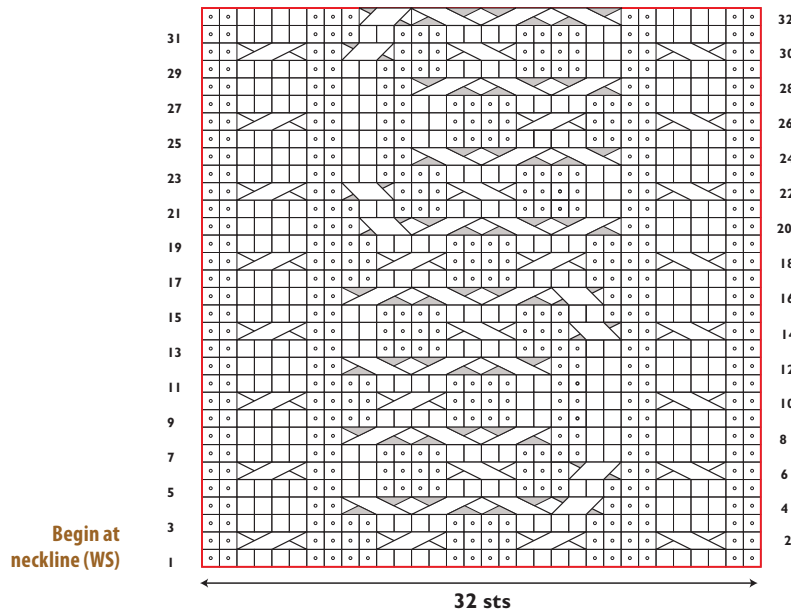




**Panel A (Saddle and Sleeve)**

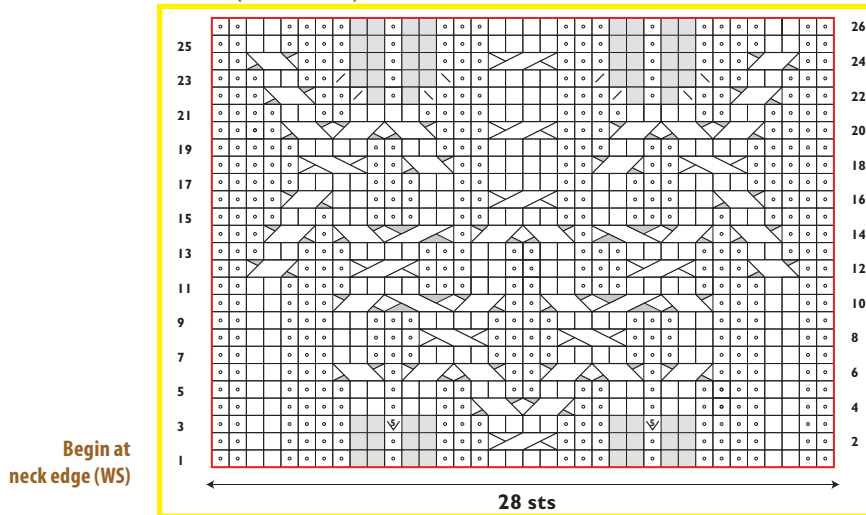


Begin at neckline (WS)

32 sts

- Knit on RS; purl on WS
- Purl on RS; knit on WS
- ∇ Make 2 from 1 st (lifted increase)
- ∇ Make 5 from 1 st (k1f,b,f,b,f)
- ⊠ k2tog on RS; p2tog on WS
- ⊞ Ssk on RS; ssp on WS
- No stitch (ignore gray square[s] and continue work with next st)
- ▭ Pattern repeat
- SI 1 st to cable needle, hold to back, k2, p1 from cable needle
- SI 2 sts to cable needle, hold to front, p1, k2 from cable.
- SI 2 sts to cable needle, hold to back; k2, k2 from cable needle
- SI 2 sts to cable needle, hold to front; k2, k2 from cable needle
- SI 2 sts to cable needle, hold to back, k2, p2 from cable needle
- SI 2 sts to cable needle, hold to front, p2, k2 from cable needle

**Panel B (Bodice Center)**



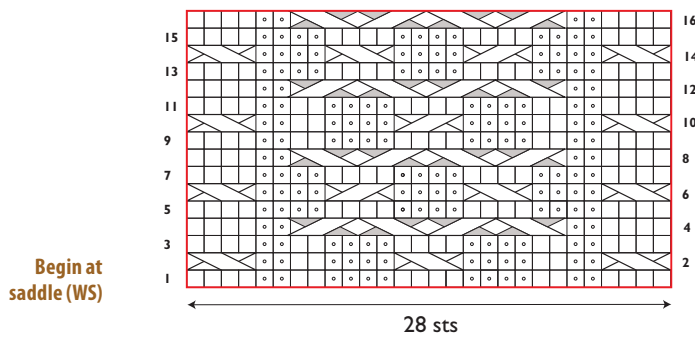
Begin at neck edge (WS)

28 sts

**Moss Stitch Panel (Bodice Front and Back, Sleeves)**



**Panel C (Bodice Front and Back)**

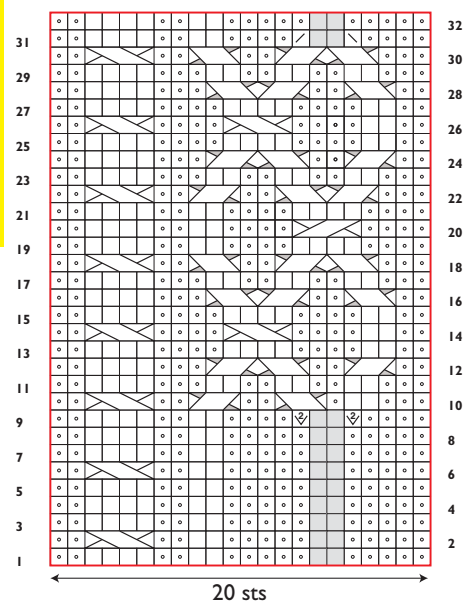


Begin at saddle (WS)

28 sts

Mirror chart horizontally as needed for opposite side of center panel and back

**Panel D (Bodice Front and Back)**



Begin at saddle (WS)

20 sts

Mirror chart horizontally as needed for opposite side of center panel and back