
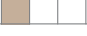
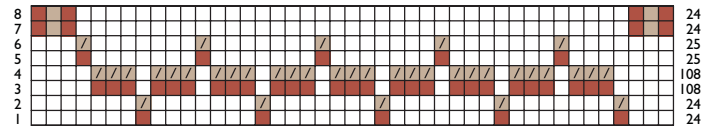
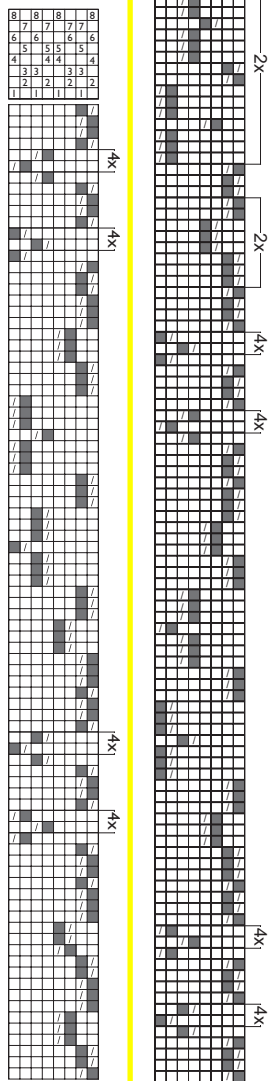


mix: browns/rust		8	8	5	12	5	12	5	12	5	12	5	12	5	12	5	12	5	12	5	12	4	8	8	189
linen		8	5	12	5	12	5	12	5	12	5	12	5	12	5	12	5	12	5	12	5	12	4	8	173
warp color order																									362

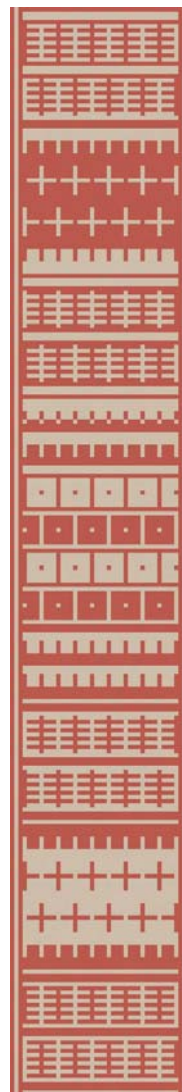


threading

TIE-UP



tie-up and treading



WARP COLOR ORDER

Follow the warp color order and wind a 3½-yard warp. Wind the 8-end constant, mixing the three colors for variety. Continue with 8 ends of linen, and then 8 mixed. Then wind the block colors, combining 3 ends of the linen and 3 ends of the color mix. Repeat the constants to balance the other edge. After winding the warp, follow the directions for Warping the Loom (page 25).

THREADING

Constant stripes form the borders along the selvages. Thread the constants on shafts 7 and 8; thread the blocks as usual, keeping the linen as background and mixing the browns as you like.

WEAVING

Spread the warp to the width of the reed by weaving 4–6 picks of 8/4 cotton. Follow the directions for Weaving an Elastic Heading (page 38). Weave the runner following the treadling draft. Weave to the end, cut off the thick weft, and tuck the tail into the same shed. Weave the final heading, using the same pair of treadles used for the last thick pick.