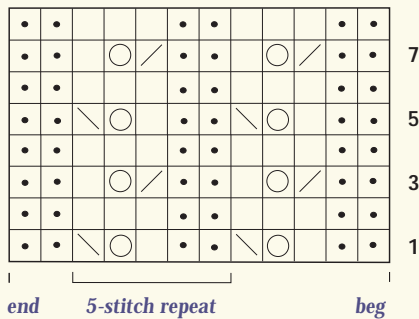


# personaltouches

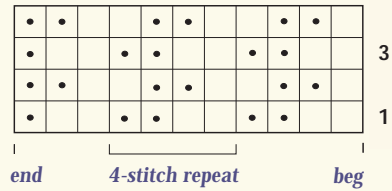
## A TRIO OF SIMPLE STITCH PATTERNS

The following stitch patterns were used in the scarves photographed on page 41— all of which were worked end-to-end. These are just a sampling of the hundreds of patterns appropriate for scarves. Each of these patterns combines knit and purl stitches so that both sides of the knitting are attractive.

**Lace Rib (multiple of 5 sts + 2)**

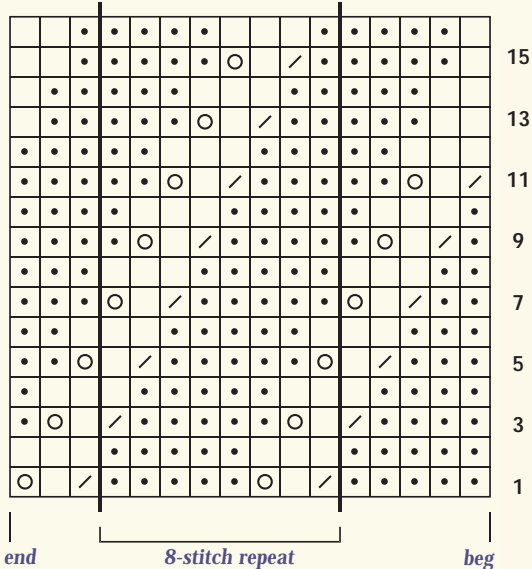


**Mistake Rib (multiple of 4 sts + 3)**



scarves

**Diagonal Lace Rib (multiple of 8 sts)**



### Stitch Key

-  *k on RS; p on WS*
-  *p on RS; k on WS*
-  *k2tog*
-  *yo*
-  *ssk*