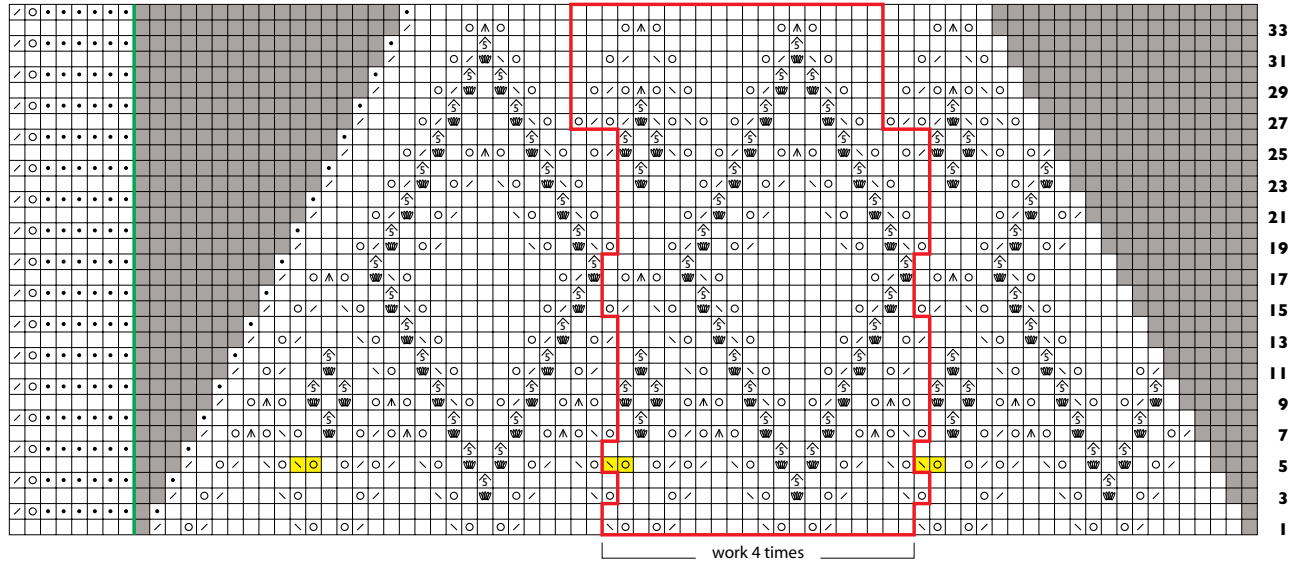


**Miralda Left Diamond**



- k on RS; p on WS
- p on RS; k on WS
- yo
- k2tog
- sl 1, k1, p2sso
- sl 2 as if to k2tog, k1, p2sso
- 5-st nupp (see Stitch Guide)
- p5tog
- no stitch
- center stitch
- pattern repeat
- marker position
- gathered sts (see Stitch Guide)
- 3-st cross (see Stitch Guide)

**Miralda Left Center**

