



INDIGO NORAGI

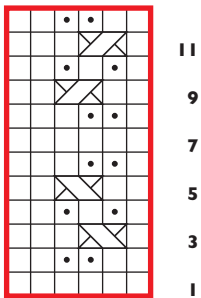
STITCH GUIDE

1/1 LC: Knit into the back of the second st on left-hand needle but do not slip this st from the needle, bring right-hand needle in front of work and knit the first st on left needle, then slip both sts off tog.

1/1 RC: Knit the second st on left-hand needle by inserting right-hand needle from front to back but do not slip this st from the needle, knit the first st on the left needle, then slip both sts off tog.



VERTICAL WAVE RIB



- k on RS, p on WS
- p on RS, k on WS
- pattern repeat
- 1/1 RC: see Stitch Guide
- 1/1 LC: see Stitch Guide

