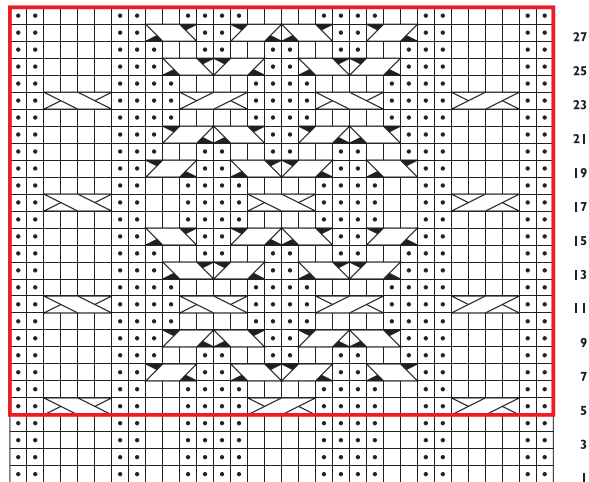
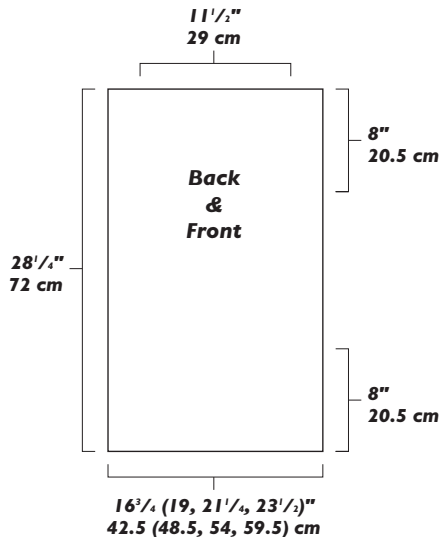


Cable



- k on RS, p on WS
- p on RS, k on WS
- pattern repeat
- 2/1 RPC: sl 1 st onto cn and hold in back, k2, p1 from cn
- 2/1 LPC: sl 2 sts onto cn and hold in front, p1, k2 from cn
- 2/2 RC: sl 2 sts onto cn and hold in back, k2, k2 from cn
- 2/2 LC: sl 2 sts onto cn and hold in front, k2, k2 from cn



BACK

With smaller needles, CO 92 (104, 116, 128) sts.

Work 9 rows in garter st.

NEXT ROW: (WS; inc row) **K13 (19, 25, 31)**, [M1 (see Glossary, page 122), k1] 2 times, k2, M1, k5, M1, k1, M1, k5, M1, k3, M1, k1, M1, **k60 (66, 72, 78)**—100 (112, 124, 136) sts.

Change to larger needles.

ROW 1: (RS) K58 (64, 70, 76), place marker (pm), work next 32 sts according to cable chart, pm, k10 (16, 22, 28).

ROW 2: K6, purl to m, work according to chart to next m, purl to last 6 sts, k6.

ROW 3: Knit to m, work according to chart to next m, knit to end.

ROW 4: Repeat Row 2.

MOVE CABLE ROW: (RS) K6, purl to 2 sts before m, p2tog, work according to chart to next m, sl m, M1P (see Glossary, page 123), purl to last 6 sts, k6.

Cont as established, keeping first and last 6 sts in garter st, 32 sts between m in cable patt, and rem sts in St st (except on Move Cable Row; see Notes, page 51), rep move cable row every fourth row 47 more times—10 (16, 22, 28) sts before first m. Work 3 rows even.

Change to smaller needles.

NEXT ROW: (RS; dec row) K12 (18, 24, 30), [k2tog] 2 times, k2, k2tog, k4, [k2tog] 2 times, k4, k2tog, k2, [k2tog] 2 times, knit to end—92 (104, 116, 128) sts rem.

Work 8 rows in garter st.

With WS facing, BO all sts kwise.

FRONT

With smaller needles, CO 92 (104, 116, 128) sts.

Work 9 rows in garter st.

NEXT ROW: (WS; inc row) K60 (66, 72, 78), [M1, k1] 2 times, k2, M1, k5, M1, k1, M1, k5, M1, k3, M1, k1, M1, k13 (19, 25, 31)—100 (112, 124, 136) sts.

Change to larger needles.