

patt, sl m, work 8 raglan sts, sl m, k2tog or p2tog as required by patt; rep from * 2 more times, work in patt to 2 sts before last marked raglan section, work ssk or ssp as required by patt, sl m, work 8 raglan sts—8 sts dec'd; 2 sts each from back, front, and each sleeve.

Cont in patt, rep dec rnd every other rnd 23 (27, 31) more times, then work 1 rnd even to end with Rnd 2 (10, 18) of Body and Sleeve charts—148 (156, 164) sts; 49 (53, 57) sts each for front and back; 9 sts for each sleeve; 8 sts each in four marked raglan sections; piece measures about 6½ (7½, 8¾)" (16.5 [19, 22] cm) from joining rnd.

Shape Front Neck

The front neck is shaped with short-rows at the same time the patts and raglan shaping continues. When working back and forth in rows, read all even-numbered chart rows as WS rows. Mark 19 (23, 27) center front sts with removable markers or waste yarn—15 front sts on each side of marked center sts. Work short-rows as foll:

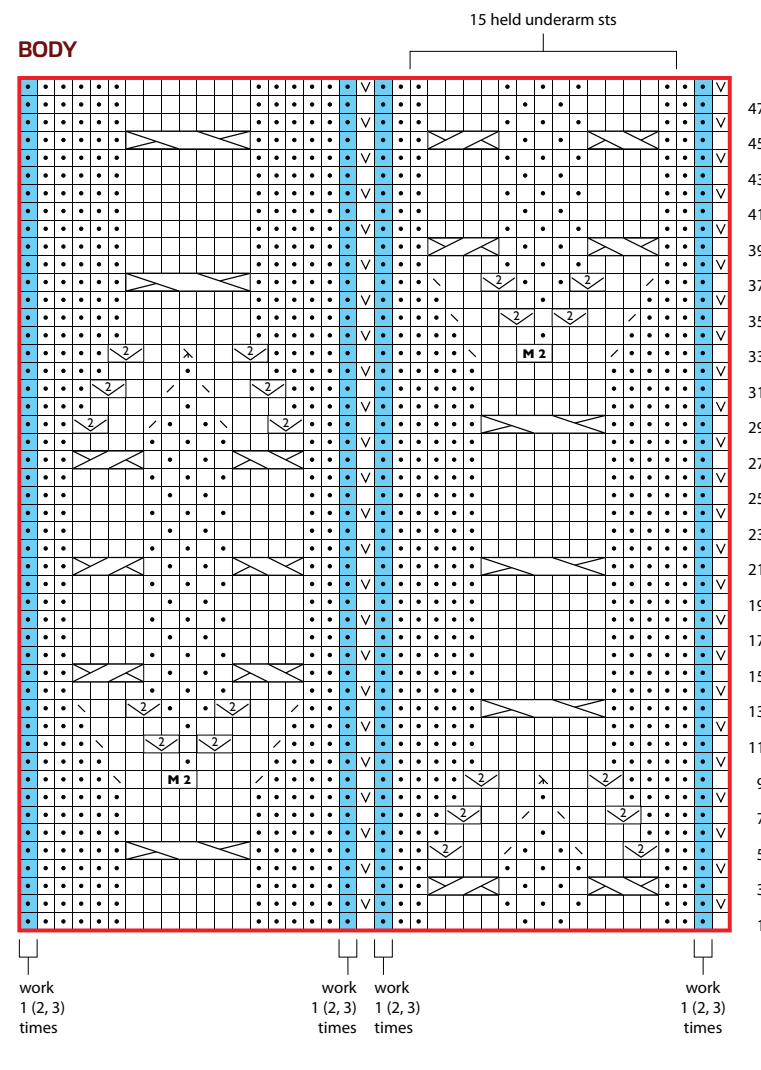
SHORT-ROW 1 (RS) Working raglan decs as established at beg of back sts and on each side of left back and left front raglans, work in patt to marked front sts, yo, turn—2 sts dec'd each from back and left sleeve; 1 st dec'd at left front.

SHORT-ROW 2 (WS) Work in patt to marked front sts, yo, turn.

SHORT-ROW 3 Working raglan decs on each side of all four raglans, work in patt to 5 sts before previous yo, make new yo, turn—2 sts dec'd each from back, front, and each sleeve.

SHORT-ROW 4 Work in patt to 5 sts before previous yo, make new yo, turn.

SHORT-ROW 5 Working raglan decs on each side of all four raglans, work in



patt to 3 sts before previous yo, make new yo, turn—2 sts dec'd each from back, front, and each sleeve.

SHORT-ROW 6 Work in patt to 3 sts before previous yo, make new yo, turn.

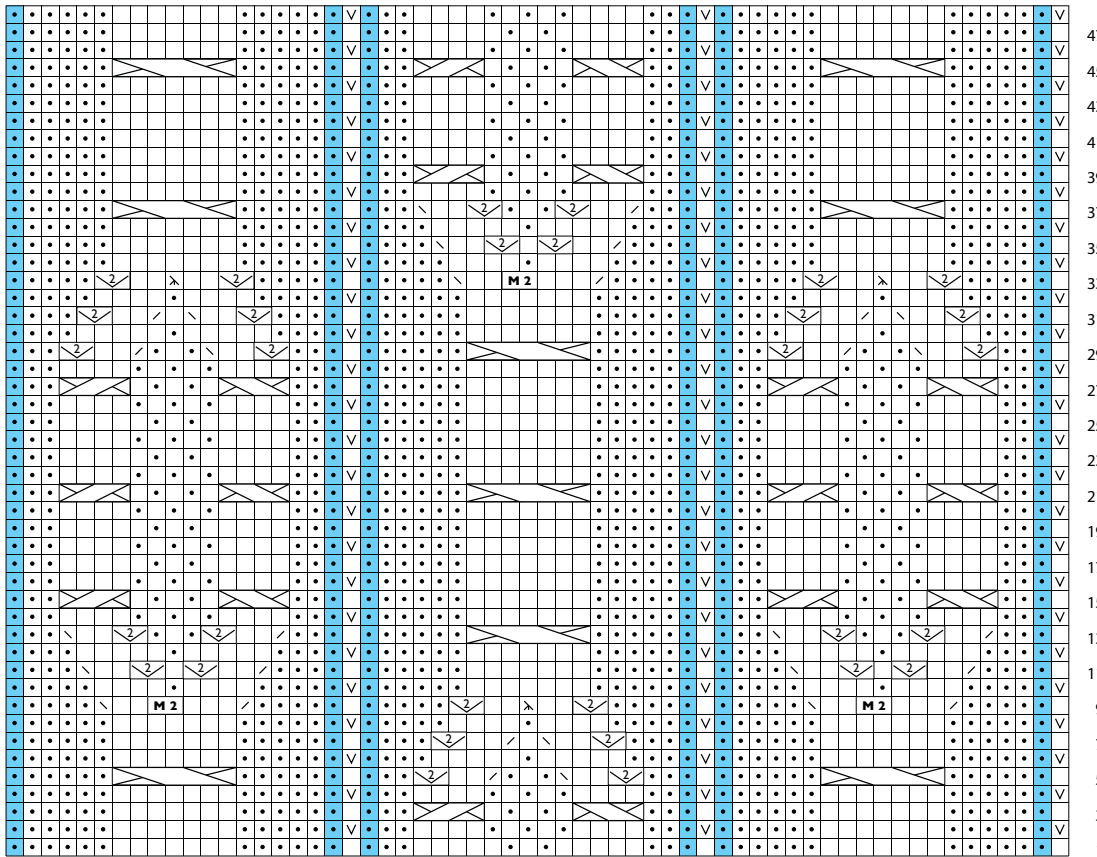
SHORT-ROW 7 Working raglan decs on each side of all four raglans, work in patt to 2 sts before previous yo, make new yo, turn—2 sts dec'd each from

back, front, and each sleeve.

SHORT-ROW 8 Work in patt to 2 sts before previous yo, make new yo, turn.

SHORT-ROW 9 Working raglan decs as established on each side of right front raglan and at end of right sleeve work in patt to original beg-of-rnd m at end of right back raglan sts—2 sts dec'd from right sleeve; 1 st dec'd at right front.

SLEEVE



work
1 (2, 3)
times

work
1 (2, 3)
times

work
1 (2, 3)
times

work
1 (2, 3)
times



k on all rnds and RS rows; p on WS rows

p on all rnds and RS rows; k on WS rows

k2tog

ssk

sssk

k1f&b

sl 1 st pwise wyb on all rnds and RS rows;
sl 1 st pwise wyf on WS rows

work shaded st the number of times shown

pattern repeat

Make 2 (see Stitch Guide)

k1f&b on both RS and WS

sl 2 sts onto cn and hold in back,
k2, k2 from cn

sl 2 sts onto cn and hold in front,
k2, k2 from cn

sl 4 sts onto cn and hold in front,
k3, k4 from cn