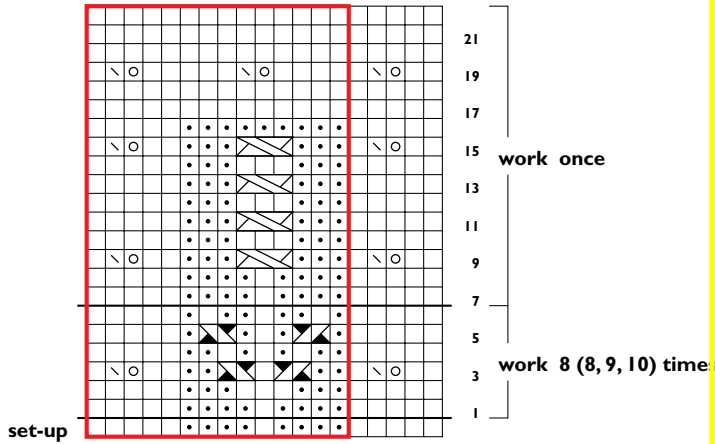


Grass



- | | |
|--------------------|---------------------------------------------------|
| k on RS; p on WS | sl 2 as if to k2tog, k1, p2sso |
| p on RS, k on WS | double inc (see Stitch Guide) |
| k1tbl on WS | no stitch |
| yo | pattern repeat |
| k2tog | sl 1 st onto cn and hold in back, k1, p1 from cn |
| ssk | sl 1 st onto cn and hold in front, p1, k1 from cn |
| p2tog | sl 1 st onto cn and hold in front, k2, k1 from cn |
| ssp (see Glossary) | |

Leaf

