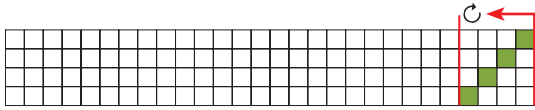
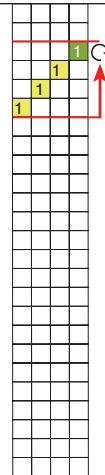
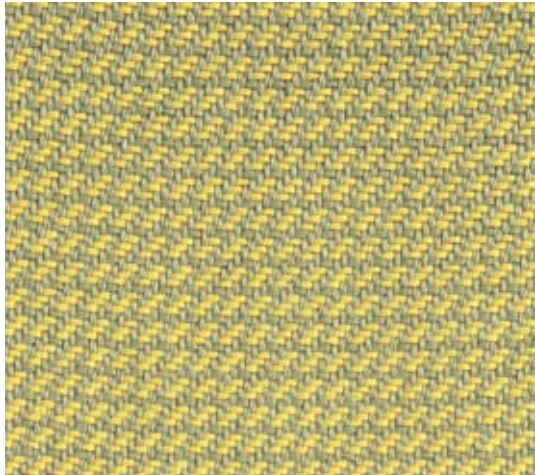


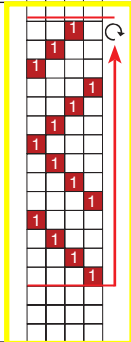
# 2/2 Twill



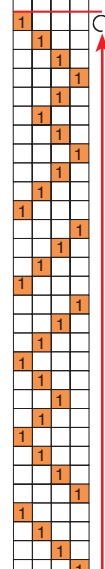
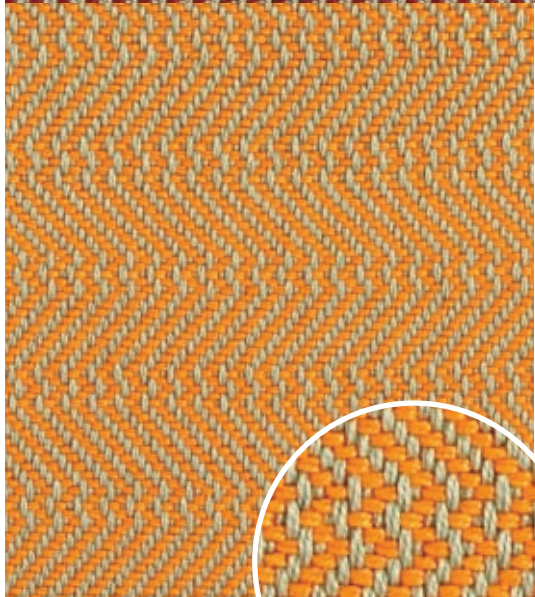
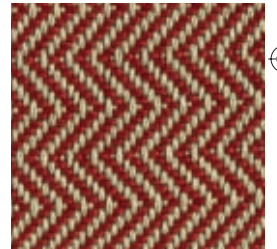
Warp color  
green  
3x2/16



◀ Weft colors  
yellow and green  
(as warp)  
Both wefts 3x2/16  
*Z diagonal*



◀ Weft color  
burgundy  
3x2/16  
*Extended zigzag  
over 14 picks*



◀ Weft color orange  
3x2/16  
*M and W pattern  
(look at the  
sequence sideways).  
Complete sequence  
30 picks.*

