

Garter-stitch border

Knit 12 rows for bottom garter-stitch border.

Lace pattern (multiple of 10 sts plus 6)

Row 1 (RS): K2, *yo, k2tog; repeat from * to 2 sts before the last marker, k2.

Rows 2, 5 and 6: Knit.

Rows 3 and 7: K1, k2tog, yo, ssk, k1, *k5, k2tog, yo, ssk, k1; repeat from *.

Rows 4 and 8: *K2, (k1, p1) into the yo of previous row, k6; repeat from * end last repeat k2.

Row 9: K6, *k2tog, yo, ssk, k6; repeat from *.

Row 10: *K7, (k1, p1) into the yo of previous row, k1; repeat from * to 6 sts before last marker, k6.

Rows 11–16: Repeat rows 3–8 once.

Repeat 16-row pattern 25 more times, then work row 1 once more.

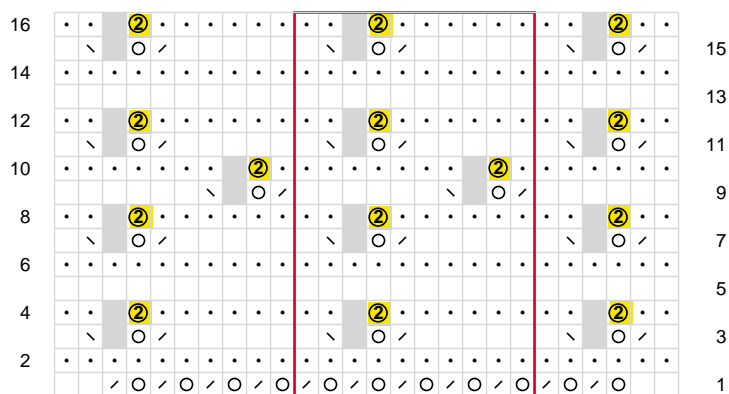
Garter-stitch border

Knit 12 rows for top garter-stitch border.

Finishing

Bind off very loosely. Use tapestry needle to weave in ends. Block.

Box-Lace Shawl Lace Pattern



Maintain the garter stitch borders on the first 6 and last 6 sts of each row.
Repeat Rows 1–16 twenty-six times.