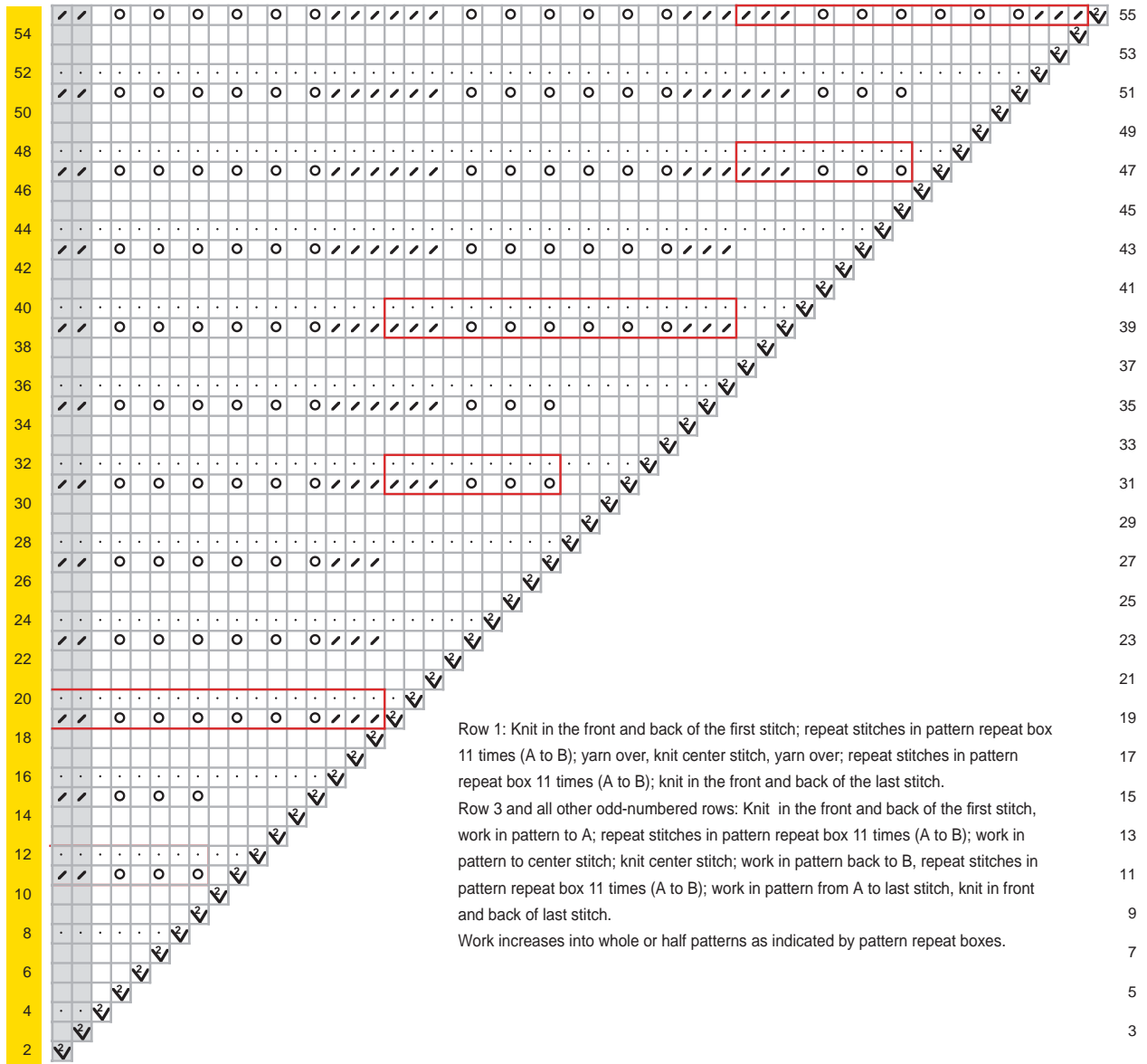


Feather and Fan Triangle Lace Pattern



Row 1: Knit in the front and back of the first stitch; repeat stitches in pattern repeat box 11 times (A to B); yarn over, knit center stitch, yarn over; repeat stitches in pattern repeat box 11 times (A to B); knit in the front and back of the last stitch.

Row 3 and all other odd-numbered rows: Knit in the front and back of the first stitch, work in pattern to A; repeat stitches in pattern repeat box 11 times (A to B); work in pattern to center stitch; knit center stitch; work in pattern back to B, repeat stitches in pattern repeat box 11 times (A to B); work in pattern from A to last stitch, knit in front and back of last stitch.

Work increases into whole or half patterns as indicated by pattern repeat boxes.

The two-column gray area is an overlap for positioning the two halves of the chart.

Work the stitches in the gray area only once.

### *Shawl*

Cast on 7 sts.

**Row 1:** Kfb, k2, yo, k1 (mark this center stitch), yo, k2, kfb—11 sts.

**Row 2 and all even-numbered (WS) rows:** Knit.

**Row 3:** Kfb, k4, yo, k1, yo, k4, kfb—15 sts.

**Row 5:** Kfb, k6, yo, k1, yo, k6, kfb—19 sts.

**Row 7:** Kfb, knit to center st, yo, k1, yo, knit to last st, kfb.

**Row 8:** Knit.

**Rows 9–16:** Repeat rows 7 and 8—39 sts.

### *Work eyelet row*

**Work eyelet row 1:** Kfb, \*yo, k2tog; repeat from \* to center st, yo, k1, yo, \*k2tog, yo; repeat from last \* to last st, kfb—43 sts.

**Next 5 rows:** Beginning with row 8, repeat rows 7 and 8—51 sts.

*Repeat last 6 rows once*—63 sts.

**Increase Row:** Increase 8 sts evenly spaced between the beginning kfb and the yo before center st and between the yo after the center st and the ending kfb—83 sts.

**Next 5 rows:** Beginning with row 8, repeat rows 7 and 8—91 sts.

**Increase row:** Increase 11 sts evenly spaced on each side of center st—117 sts.

**Next 5 rows:** Beginning with row 8, repeat rows 7 and 8—125 sts.

**Work eyelet row 2:** Kfb, k1\*yo, k2tog; repeat from \* to center st, yo, k1, yo, \*K2tog, yo; repeat from \* to last 2 sts, end k1, kfb—129 sts.

**Next 5 rows:** Beginning with row 8, repeat rows 7 and 8—137 sts.

**Next row:** Work eyelet row 2—141 sts.

**Next 35 rows:** Beginning with row 8, repeat rows 7 and 8—209 sts.

**Next row:** Work eyelet row 2—213 sts.

**Next 5 rows:** Beginning with row 8, repeat rows 7 and 8—221 sts.

**Next row:** Work eyelet row 2—225 sts.

**Next 17 rows:** Beginning with row 8, repeat rows 7 and 8—257 sts.

**Next row:** Work eyelet row 2—261 sts.

**Next 5 rows:** Beginning with row 8, repeat rows 7 and 8—269 sts.

**Next row:** Work eyelet row 2—273 sts.

### *Tails*

**Row A (WS):** Kfb, knit to last st, kfb.

**Row B (RS):** Kfb, knit to center st, yo, k1, yo, knit to last st, kfb.

Repeat rows A and B for 33 more rows—377 sts.

**Next row:** Work eyelet row 2—381 sts.

Repeat rows A and B for five rows—395 sts.

**Next row:** Work eyelet row 1—399 sts.

### *Begin lace pattern and color bands*

On next row (WS), change to medium gray and purl one row. Begin feather and fan lace from charts. Continue to increase at each end on every row and on each side of the center stitch on every other row throughout the lace pattern. **Change yarn from medium gray to light gray at row 33.** When charts are complete, knit one row. Bind off loosely in knit.

### *Finishing*

Use tapestry needle to weave in ends. Block.