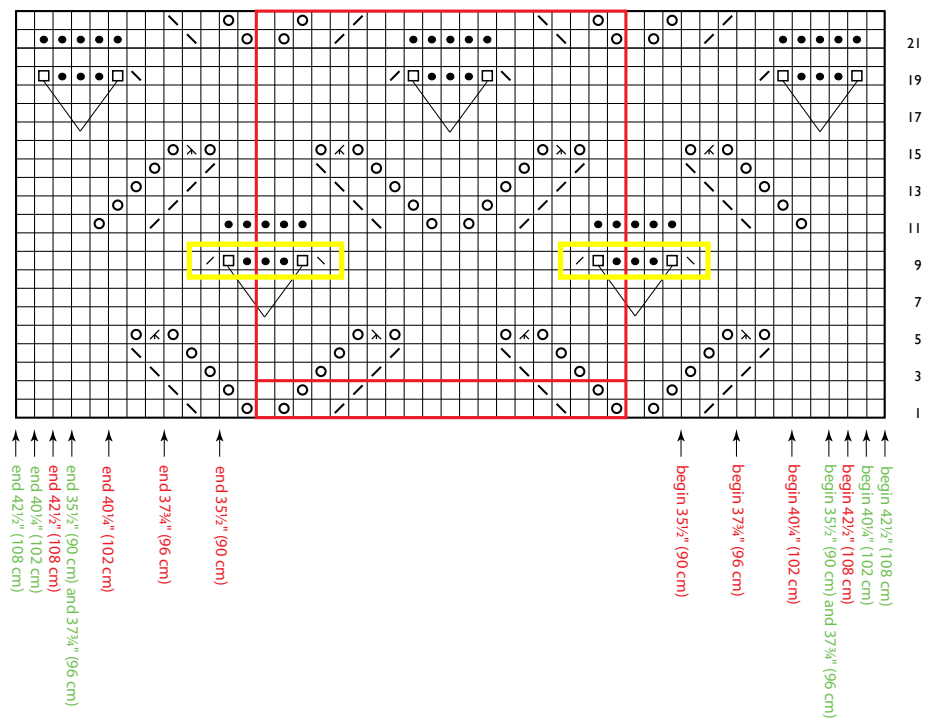




POMPON



- Knit on RS; purl on WS
- Purl on RS; knit on WS
- Yarnover
- ⊠ K2tog on RS; p2tog on WS

- ⊞ Ssk on RS; p2tog tbl on WS
- ⊗ K3tog
- ⊘ Sssk
- ⊡ Insert needle into stitch (indicated by black v-line) three rows below and k1

- Pattern repeat
- Body
- Sleeve