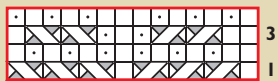


- k tbl on RS; p tbl on WS
- p on RS; k on WS
- yo
- k2tog tbl
- ssk: Slip 2 sts individually kwise, replace these sts on left needle, knit them tog through their front loops.
- ssp
- p2tog
- k yo tbl
- p yo tbl
- no stitch
- sl 1 st onto cn and hold in front, p1, k1tbl from cn
- sl 1 st onto cn and hold in back, k1tbl, p1 from cn
- pattern repeat

Arrowhead A

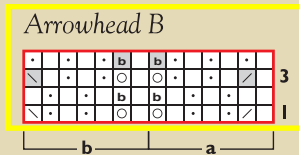


end body 32½", 39½", 46½";
end sleeve sizes 32½", 36", 46½", 50"

end sleeve sizes 39½", 43"
beg, end body sizes 36", 43", 50"

beg sleeve all sizes
beg body 32½", 39½", 46½"

Arrowhead B



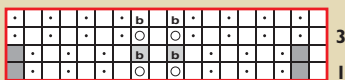
end body, neckband all sizes;
end sleeve sizes 32½", 36", 46½", 50"

end sleeve sizes 39½", 43"

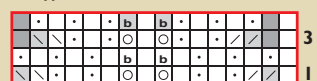
beg body, sleeve, neckband all size

Note: For each row where additional collar sts are worked in Arrowhead B patt, work new sts so that a and b sections alternate.

Collar



Cuff



end sleeve sizes 32½", 36", 46½", 50"

end sleeve sizes 39½", 43"

beg sleeve all sizes

Note

- In shaped areas such as sleeve and armhole shapings, when there is not a pair of stitches to cross, work the odd stitch in stockinette.

Back

Using the tubular method (see page 17), CO 128 (142, 156, 170, 184, 198) sts. *Next row:* (RS) K1 (edge st), *k1 through back loop (tbl), sl 1 with yarn in front (wyf); rep from * to last st, k1 (edge st). Rep this row once more on WS. *Next row:* (RS) K1, *k1tbl, p1; rep from * to last st, p1. Work 1 row as established, working the purl sts tbl. Keeping 1 st in St st at each edge, work Rows 1–4 of Arrowhead A chart over center 126 (140, 154, 168, 182, 196) sts until piece measures 13¾ (14, 14¼, 14½, 14¾, 15)" (35 [35.5, 36, 37, 37.5, 38] cm), ending with a WS row.

Shape Armholes

Cont in patt, BO 4 (4, 5, 5, 5) sts at beg of next row, then BO 3 (3, 4, 4, 4) sts at beg of next (WS) row, then BO 4 (4, 5, 5, 5) sts at beg of next 2 rows—113 (127, 137, 151, 165, 179) sts rem. Dec 1 st each end of needle every RS row 2 (4, 6, 8, 10, 12) times, then every 4 rows 2 (5, 6, 8, 9, 11) times—105 (109, 113, 119, 127, 133) sts rem. Cont even in patt until armholes measure about 7¼ (7½, 7¾, 8, 8¼, 8½)" (18.5 [19, 19.5, 20.5, 21, 21.5] cm), ending with Row 4 of chart.

Shape Shoulders and Beg Neck

- Row 1:** (RS) BO 4 (6, 8, 4, 8, 11) sts (1 st rem on right needle), work 40 (40, 40, 47, 47, 47) more sts as established, work Row 1 of Arrowhead B chart over next 14 sts, work as established to end—101 (103, 105, 115, 119, 122) sts rem.
- Row 2:** BO 4 (6, 8, 4, 8, 11) sts, work to end as established—97 (97, 97, 111, 111, 111) sts rem.
- Row 3:** BO 7 sts (1 st rem on right needle), work 26 (26, 26, 33, 33, 33) sts more as established, work Row 3 of Arrowhead B chart over next 28 sts, work as established to end—90 (90, 90, 104, 104, 104) sts rem.
- Rows 4 and 6:** BO 7 sts, work as established to end—83 (83, 83, 97, 97, 97) sts rem after Row 4; 69 (69, 69, 83, 83, 83) sts rem after Row 6.
- Row 5:** BO 7 sts (1 st rem on right needle), work 12 (12, 12, 19, 19, 19) sts more as established, work Row 1 of Arrowhead B chart over next 42 sts, work as established to end—76 (76, 76, 90, 90, 90) sts rem.