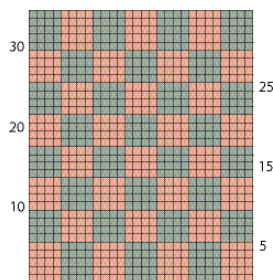


Working colorwork patterns from a chart



Begin by working the foundation chain in the first color, then work the pattern starting at the bottom right-hand corner of the chart, joining in new colors as they occur on the chart. See page 117 for how to join in a new yarn. On the first row, work the first stitch into the second chain from the hook, then work the rest of the row in single crochet.

Each square on the chart represents one stitch and you should always work upward from the bottom of the chart, reading odd-numbered rows (right side rows) from right to left and even-numbered rows (wrong side rows) from left to right.

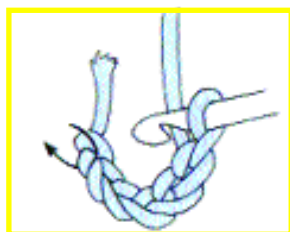
When changing yarns, carry the yarn not in use loosely across the back

of the work and pick it up again when it is needed. This is called stranding and it works well when the areas of color are narrow, but when areas are wider than six stitches, use a small ball of yarn to work each color, looping the old yarn around the new one at each changeover on the row to avoid holes.

Working in rounds

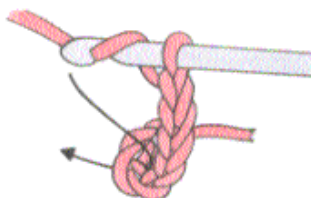
Blocks worked in rounds are worked outward from a central ring of chains called a foundation ring.

Making a foundation ring



Work a short length of foundation chain (page 114) as specified in the pattern. Join the chains into a ring by working a slip stitch into the first stitch of the foundation chain.

Working into the ring



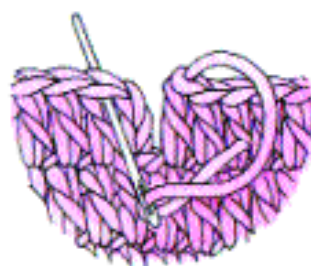
1 Work the number of turning chains specified in the pattern—three chains are shown here (counting as a double crochet stitch). Inserting the hook into the space at the center of the ring each time, work the number of stitches specified in the pattern into the ring. Count the stitches at the end of the round to check you have worked the correct number.



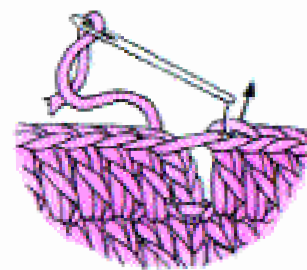
2 Join the first and last stitches of the round together by working a slip stitch into the top of the turning chain.

Finishing off the final round

To make a neat edge, finish off the final round by using this method of sewing the first and last stitches together in preference to the slip stitch joining method shown left.



1 Cut the yarn, leaving an end of about 4" (10cm) and draw it through the last stitch. With right side facing, thread the end in a large tapestry needle and take it under both loops of the stitch next to the turning chain.



2 Pull the needle through and insert it into the center of the last stitch of the round. On the wrong side, pull the needle through to complete the stitch, adjust the length of the stitch to close the round, then weave in the end on the wrong side in the usual way.