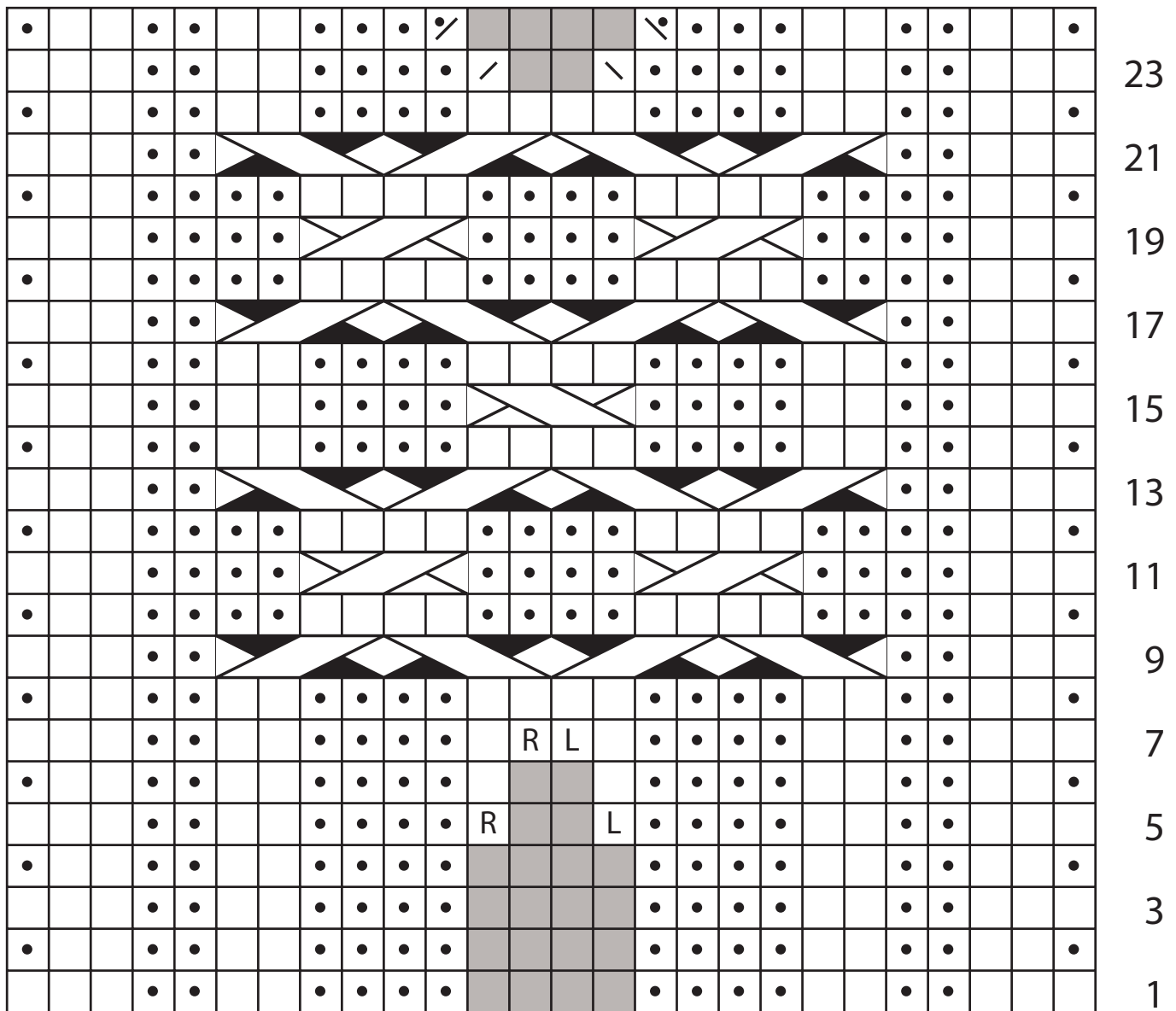


# Atle Beret to Knit: A Viking Cable Project

ELSEBETH LAVOLD

## Brim

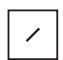


22 sts (inc to 26)

Key

 k on RS; p on WS


 p on RS; k on WS


 k2tog

 ssk

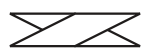
 ssk on WS

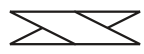
 k2tog on WS


 right lifted inc


 left lifted inc

 no st

 sl 2 sts onto cn, hold in back, k2, k2 from cn

 sl 2 sts onto cn, hold in front, k2, k2 from cn

 sl 2 sts onto cn, hold in back, k2, p2 from cn

 sl 2 sts onto cn, hold in front, p2, k2 from cn